

Active Recombinant Human CD22 Protein, hFc-tagged

Cat. No. CD22-596H Lot. No. (See product label)

SPECIFICATION

Product Overview	Recombinant Human CD22 Protein(Asp20-Arg687), fused with hFc tag, was expressed in HEK293.
Species	Human
Source	HEK293
ProteinLength	Asp20-Arg687
Form	Lyophilized from 0.22 µm filtered solution in PBS, pH7.4.
Bio-activity	When Recombinant Human CD22/ hFC Protein is immobilized at 2g/mL (100 µ/well), the concentration of Anti-Human CD22(pinatuzumab) that produces 50% of the optimal binding response is approximately 60 ng/ml.
Molecular Mass	The protein has a calculated MW of 101kDa.The reducing (R) heterodimer protein migrates as 130-150 kDa due to glycosylation
Endotoxin	<1EU/mg
Purity	SDS-PAGE>95%
Storage	Store at -20°C.
Reconstitution	It is recommended that sterile water be added to the vial to prepare a stock solution of

 Tel: 1-631-559-9269 1-516-512-3133

 Email: info@creative-biomart.com  Fax: 1-631-938-8127

 45-1 Ramsey Road, Shirley, NY 11967, USA

0.2 ug/ul. Centrifuge the vial at 4°C before opening to recover the entire contents.

GENE INFORMATION

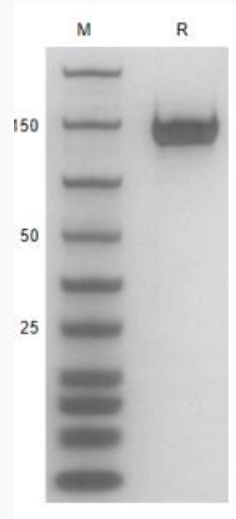
Gene Name	CD22 CD22 molecule [Homo sapiens]
Official Symbol	CD22
Synonyms	CD22; CD22 molecule; CD22 antigen; B-cell receptor CD22; sialic acid binding Ig like lectin 2; SIGLEC 2; SIGLEC2; BL-CAM; T-cell surface antigen Leu-14; B-lymphocyte cell adhesion molecule; sialic acid binding Ig-like lectin 2; sialic acid-binding Ig-like lectin 2; SIGLEC-2; FLJ22814; MGC130020;
Gene ID	933
mRNA Refseq	NM_001185099
Protein Refseq	NP_001172028
MIM	107266
UniProt ID	P20273

 Tel: 1-631-559-9269 1-516-512-3133

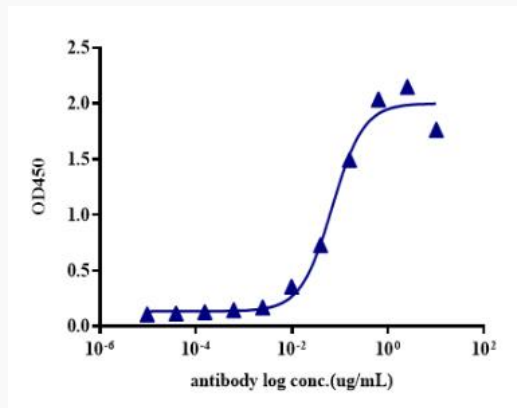
 Email: info@creative-biomart.com  Fax: 1-631-938-8127

 45-1 Ramsey Road, Shirley, NY 11967, USA

SDS-PAGE



ELISA



 Tel: 1-631-559-9269 1-516-512-3133

 Email: info@creative-biomart.com  Fax: 1-631-938-8127

 45-1 Ramsey Road, Shirley, NY 11967, USA