

CD22 protein-coupled magnetic MicroBeads

Cat. No. CD22-753M **Lot. No.** (See product label)

SPECIFICATION

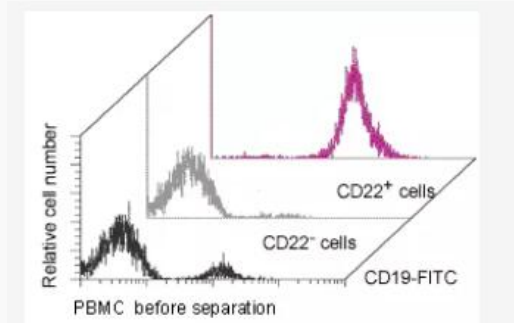
Species Human

Capacity for 1×10^9 total cells

Background In peripheral blood, cell surface expression of the CD22 antigen is found on mature B cells, but is lost during terminal differentiation to plasma cells. In bone marrow, surface expression of CD22 can be detected from the pre-B cell stage on. Cytoplasmic expression of CD22 can also be found in late pro-B cells and early pre-B cells.

Application The purified B cells may be used for cell biological studies, such as analysis of signal transduction, mixed lymphocyte responses, antigen presentation, or for molecular studies, e.g. PCR analysis.

Analysis



Separation of CD22+ cells from PBMCs using CD22 MicroBeads, an MS Column, and a MiniMACS Separator. Cells are stained with CD19-FITC.

 Tel: 1-631-559-9269 1-516-512-3133

 Email: info@creative-biomart.com  Fax: 1-631-938-8127

 45-1 Ramsey Road, Shirley, NY 11967, USA