

Recombinant Human CD226 Protein, hlgG-His-Tagged

Cat. No. CD226-01H Lot. No. (See product label)

SPECIFICATION

Product Overview	Recombinant Human CD226 Protein, hlgG-His-Tagged was expressed in Baculovirus cell line.
Species	Human
Source	Insect Cells
ProteinLength	471aa
Description	This gene encodes a glycoprotein expressed on the surface of NK cells, platelets, monocytes and a subset of T cells. It is a member of the Ig-superfamily containing 2 Ig-like domains of the V-set. The protein mediates cellular adhesion of platelets and megakaryocytic cells to vascular endothelial cells. The protein also plays a role in megakaryocytic cell maturation. Alternative splicing results in multiple transcript variants.
Form	Liquid
Molecular Mass	53.2 kDa
Endotoxin	< 1 EU per 1ug of protein (determined by LAL method)
Purity	> 90% by SDS-PAGE
Applications	SDS-PAGE

 Tel: 1-631-559-9269 1-516-512-3133

 Email: info@creative-biomart.com  Fax: 1-631-938-8127

 45-1 Ramsey Road, Shirley, NY 11967, USA

Notes	Note: For research use only. This product is not intended or approved for human, diagnostics or veterinary use.
Storage	Can be stored at +2C to +8C for 1 week. For long term storage, aliquot and store at -20C to -80C. Avoid repeated freezing and thawing cycles.
Concentration	0.5mg/ml (determined by absorbance at 280nm)
Storage Buffer	Liquid in. Phosphate-Buffered Saline (pH 7.4) containing 10% glycerol

GENE INFORMATION

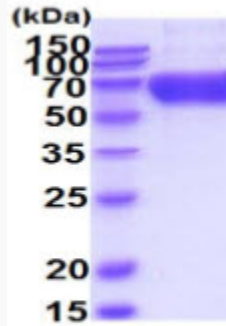
Gene Name	CD226 CD226 molecule [Homo sapiens (human)]
Official Symbol	CD226
Synonyms	CD226 antigen isoform, CD226, DNAM-1, DNAM1, PTA1, TLISA1
Gene ID	10666
mRNA Refseq	NM_006566.4
Protein Refseq	NP_006557.2
MIM	605397
UniProt ID	Q15762

 Tel: 1-631-559-9269 1-516-512-3133

 Email: info@creative-biomart.com  Fax: 1-631-938-8127

 45-1 Ramsey Road, Shirley, NY 11967, USA

SDS-PAGE



15% SDS-PAGE (3ug)

3ug by SDS-PAGE under reducing condition and visualized by coomassie blue stain

 Tel: 1-631-559-9269 1-516-512-3133

 Email: info@creative-biomart.com  Fax: 1-631-938-8127

 45-1 Ramsey Road, Shirley, NY 11967, USA