

Recombinant Human CD226 Protein, GST-Tagged

Cat. No. CD226-0750H **Lot. No.** (See product label)

SPECIFICATION

Product Overview	Human CD226 partial ORF (NP_006557, 21 a.a. - 127 a.a.) recombinant protein with GST-tag at N-terminal.
Species	Human
Source	Wheat Germ
Description	This gene encodes a glycoprotein expressed on the surface of NK cells, platelets, monocytes and a subset of T cells. It is a member of the Ig-superfamily containing 2 Ig-like domains of the V-set. The protein mediates cellular adhesion of platelets and megakaryocytic cells to vascular endothelial cells. The protein also plays a role in megakaryocytic cell maturation. Alternative splicing results in multiple transcript variants. [provided by RefSeq, Jan 2015]
Molecular Mass	37.51 kDa
AA Sequence	VLWHTSVFPAENMSLECVYPSMGILTQVEWFKIGTQQDSIAIFSPTHGMVIRKPYAE RVYFLNSTMASNNMTLFFRNASEDDVGYYSCSLYTPQGTWQKVIQVVQS
Applications	Enzyme-linked Immunoabsorbent Assay Western Blot (Recombinant protein) Antibody Production Protein Array
Storage	Store at -80 centigrade. Aliquot to avoid repeated freezing and thawing.

 Tel: 1-631-559-9269 1-516-512-3133

 Email: info@creative-biomart.com  Fax: 1-631-938-8127

 45-1 Ramsey Road, Shirley, NY 11967, USA

Storage Buffer 50 mM Tris-HCl, 10 mM reduced Glutathione, pH=8.0 in the elution buffer.

GENE INFORMATION

Gene Name CD226 CD226 molecule [Homo sapiens]

Official Symbol CD226

Synonyms CD226; CD226 molecule; CD226 antigen; DNAM 1; DNAM1; PTA1; TLISA1; adhesion glycoprotein; DNAX accessory molecule 1; DNAX accessory molecule-1; platelet and T cell activation antigen 1; T lineage-specific activation antigen 1 antigen; DNAM-1;

Gene ID 10666

mRNA Refseq NM_006566

Protein Refseq NP_006557

MIM 605397

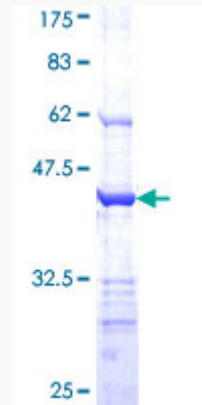
UniProt ID Q15762

 Tel: 1-631-559-9269 1-516-512-3133

 Email: info@creative-biomart.com  Fax: 1-631-938-8127

 45-1 Ramsey Road, Shirley, NY 11967, USA

**Quality Control
Testing**



12.5% SDS-PAGE Stained with Coomassie Blue.

 Tel: 1-631-559-9269 1-516-512-3133

 Email: info@creative-biomart.com  Fax: 1-631-938-8127

 45-1 Ramsey Road, Shirley, NY 11967, USA