

Recombinant Full Length Human CD226 Protein, C-Flag-tagged

Cat. No. CD226-1273HFL **Lot. No.** (See product label)

SPECIFICATION

Product Overview	Recombinant Full Length Human CD226 Protein, fused to Flag-tag at C-terminus, was expressed in Mammalian cells.
Species	Human
Source	Mammalian Cells
Description	This gene encodes a glycoprotein expressed on the surface of NK cells, platelets, monocytes and a subset of T cells. It is a member of the Ig-superfamily containing 2 Ig-like domains of the V-set. The protein mediates cellular adhesion of platelets and megakaryocytic cells to vascular endothelial cells. The protein also plays a role in megakaryocytic cell maturation. Alternative splicing results in multiple transcript variants.
Form	25 mM Tris HCl, pH 7.3, 100 mM glycine, 10% glycerol.
Molecular Mass	36.5 kDa
AA Sequence	MDYPTLLLALLHVYRALCEEVLWHTSVPFENMSLECVYPSMGILTQVEWFKIGTQQ DSIAIFSPTHGMV IRKPYAERVYFLNSTMASNNMTLFFRNASEDDVGYYSCLSLYTYP QGTWQKVIQVVQSDSFEAAVPSNSHI VSEPGKNVTLTCQPQMTWPVQAVRWEKIQ PRQIDLLTYCNLVHGRNFTSKFPRQIVSNCSHGRWSVIVIP DVTVSDSGLYRCYLQA SAGENETFVMRLTVAEGKTDNQYTLFVAGGTVLLLLFVISITTIIVIFLNRRRR RERRDLFTESWDTQKAPNNYRSPISTGQPTNQSMDDTREDIYVNYPTFSRRPKTRV

 Tel: 1-631-559-9269 1-516-512-3133

 Email: info@creative-biomart.com  Fax: 1-631-938-8127

 45-1 Ramsey Road, Shirley, NY 11967, USA

TRTRPLEQKLISEEDLAANDILDYKDDDDKV

Purity > 80% as determined by SDS-PAGE and Coomassie blue staining.

Stability Stable for 12 months from the date of receipt of the product under proper storage and handling conditions. Avoid repeated freeze-thaw cycles.

Storage Store at -80 centigrade.

Concentration >50 ug/mL as determined by microplate BCA method.

Preparation Recombinant protein was captured through anti-DDK affinity column followed by conventional chromatography steps.

Protein Families Druggable Genome, Transmembrane

Protein Pathways Cell adhesion molecules (CAMs)

Full Length Full L.

GENE INFORMATION

Gene Name [CD226 CD226 molecule \[Homo sapiens \(human\) \]](#)

Official Symbol [CD226](#)

Synonyms PTA1; DNAM1; DNAM-1; TLISA1

Gene ID [10666](#)

mRNA Refseq [NM_006566.4](#)

 Tel: 1-631-559-9269 1-516-512-3133

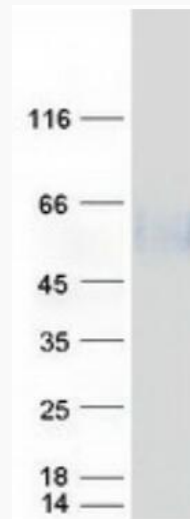
 Email: info@creative-biomart.com  Fax: 1-631-938-8127

 45-1 Ramsey Road, Shirley, NY 11967, USA

Protein Refseq NP_006557.2

MIM 605397

UniProt ID Q15762



Coomassie blue staining of purified CD226 protein.

 Tel: 1-631-559-9269 1-516-512-3133

 Email: info@creative-biomart.com  Fax: 1-631-938-8127

 45-1 Ramsey Road, Shirley, NY 11967, USA