

Recombinant Human CD226 Protein, C-His-tagged

Cat. No. CD226-220H **Lot. No.** (See product label)

SPECIFICATION

Product Overview	Recombinant Human CD226 Protein with C-His tag was expressed in E. coli.
Species	Human
Source	E.coli
Description	DNAM-1/CD226 is a member of the immunoglobulin-like superfamily. It is expressed on T cells, natural killer (NK) cells, monocytes, and macrophages. It is a major activating receptor on NK cells. Engagement with its ligands Nectin-2 (CD112) and PVR (poliovirus receptor, also known as CD155) on the target cells leads to downstream activation of ERK, AKT, and PLCg2 signaling pathways that are crucial for NK activation and NK-mediated killing. LFA-1 physically associates with DNAM-1/CD226 and contributes to its signaling. Activating signal of DNAM-1/CD226 is counterbalanced by inhibitory receptors TIGIT and CD96, competing for the common ligands CD122 and PVR.
Molecular Mass	~26 kDa
AA Sequence	EEVLWHTSVPF AENMSLECVYPSMGILTQVEWFKIGTQQDSIAIFSPHGMVIRKPY AERVYFLNSTMASNNMTLFFRNASEDDVGYYSCSLYTY PQGTWQKVIQVVQSDSFE AAVPSNSHIVSEPGKNVTLTCQPQMTWPVQAVRWEKIQPRQIDLLTYCNLVHGRNF TSKFPRQIVSNCSHGRWSVIVIPDVTVSDSGLYRCYLQASAGENETFVMRLTVAEGK TDNQYTLFVA
Purity	Transferred into competent cells and the supernatant was purified by NI column

 Tel: 1-631-559-9269 1-516-512-3133

 Email: info@creative-biomart.com  Fax: 1-631-938-8127

 45-1 Ramsey Road, Shirley, NY 11967, USA

affinity chromatography and the purity is > 85% (by SDS-PAGE).

Notes

For research use only, not for use in diagnostic procedure.

Storage

Store at 4 centigrade short term. Aliquot and store at -20 centigrade long term. Avoid freeze-thaw cycles.

Concentration

≥0.5 mg/mL

Storage Buffer

PBS, 4M Urea, pH7.4

GENE INFORMATION

Gene Name

CD226 CD226 molecule [Homo sapiens (human)]

Official Symbol

CD226

Synonyms

CD226; CD226 molecule; PTA1; DNAM1; DNAM-1; TLIISA1; CD226 antigen; DNAX accessory molecule-1; T lineage-specific activation antigen 1 antigen; adhesion glycoprotein; platelet and T cell activation antigen 1

Gene ID

10666

mRNA Refseq

NM_006566

Protein Refseq

NP_006557

MIM

605397

UniProt ID

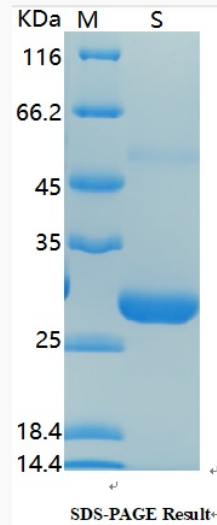
Q15762

 Tel: 1-631-559-9269 1-516-512-3133

 Email: info@creative-biomart.com  Fax: 1-631-938-8127

 45-1 Ramsey Road, Shirley, NY 11967, USA

SDS-PAGE



 Tel: 1-631-559-9269 1-516-512-3133

 Email: info@creative-biomart.com  Fax: 1-631-938-8127

 45-1 Ramsey Road, Shirley, NY 11967, USA