

## Active Recombinant Human CD226 protein, His-tagged

**Cat. No.** CD226-229H    **Lot. No.** (See product label)

### SPECIFICATION

<b>Product Overview</b>	Active Recombinant Human CD226 protein(NP_006557.2)(Met 1-Asn 247) was expressed in HEK293, fused with a polyhistidine tag at the C-terminus.
<b>Species</b>	Human
<b>Source</b>	HEK293
<b>ProteinLength</b>	1-247 aa
<b>Form</b>	Lyophilized from sterile PBS, pH 7.4.
<b>Bio-activity</b>	Measured by its binding ability in a functional ELISA. Immobilized human CD226 at 2 µg/ml (100 µl/well) can bind human CD112 with a linear ranger of 6.4-800 ng/ml.
<b>Molecular Mass</b>	The recombinant human DNAM1 comprises 240 amino acids and has a predicted molecular mass of 27.6 kDa. As a result of glycosylation, rh DNAM1 migrates with an apparent molecular mass of 40-50 kDa in SDS-PAGE under reducing conditions.
<b>Endotoxin</b>	< 1.0 EU per µg protein as determined by the LAL method.
<b>Purity</b>	> 97 % as determined by SDS-PAGE
<b>Storage</b>	Store it under sterile conditions at -20°C to -80°C upon receiving. Recommend to aliquot the protein into smaller quantities for optimal storage. Avoid repeated freeze-thaw cycles.

 Tel: 1-631-559-9269    1-516-512-3133

 Email: [info@creative-biomart.com](mailto:info@creative-biomart.com)     Fax: 1-631-938-8127

 45-1 Ramsey Road, Shirley, NY 11967, USA

**Reconstitution** It is recommended that sterile water be added to the vial to prepare a stock solution of 0.2 ug/ul. Centrifuge the vial at 4°C before opening to recover the entire contents.

## GENE INFORMATION

**Gene Name** CD226 CD226 molecule [ Homo sapiens ]

**Official Symbol** CD226

**Synonyms** CD226; CD226 molecule; CD226 antigen; DNAM 1; DNAM1; PTA1; TLISA1; adhesion glycoprotein; DNAX accessory molecule 1; DNAX accessory molecule-1; platelet and T cell activation antigen 1; T lineage-specific activation antigen 1 antigen; DNAM-1;

**Gene ID** 10666

**mRNA Refseq** NM\_006566

**Protein Refseq** NP\_006557

**MIM** 605397

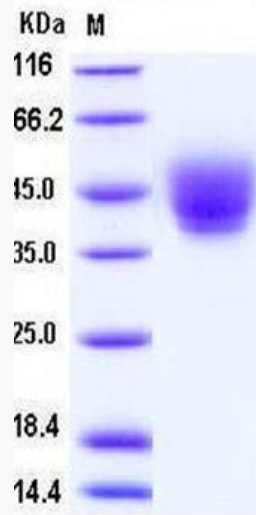
**UniProt ID** Q15762

 Tel: 1-631-559-9269 1-516-512-3133

 Email: [info@creative-biomart.com](mailto:info@creative-biomart.com)  Fax: 1-631-938-8127

 45-1 Ramsey Road, Shirley, NY 11967, USA

SDS-PAGE



 Tel: 1-631-559-9269 1-516-512-3133

 Email: [info@creative-biomart.com](mailto:info@creative-biomart.com)  Fax: 1-631-938-8127

 45-1 Ramsey Road, Shirley, NY 11967, USA