

Recombinant Human CD226 Protein (Met1-Asn247), C-His tagged

Cat. No. CD226-3924H Lot. No. (See product label)

SPECIFICATION

Product Overview	Recombinant human CD226 (Met1-Asn247) fused with the C-terminal His tag was expressed in Mammalian cells.
Species	Human
Source	Mammalian Cells
ProteinLength	Met1-Asn247
Form	Lyophilized powder/frozen liquid
Molecular Mass	27.94 kDa
Endotoxin	< 1.0 EU/μg of the protein as determined by the LAL method.
Purity	>90% as determined by SDS-PAGE.
Notes	For research use only.
Storage	Use a manual defrost freezer and avoid repeated freeze thaw cycles. Store at 2 to 8 centigrade for one week. Store at -20 to -80 centigrade for twelve months from the date of receipt.
Storage Buffer	Supplied as solution form in PBS, pH 7.5 or lyophilized from PBS, pH 7.5.

 Tel: 1-631-559-9269 1-516-512-3133

 Email: info@creative-biomart.com  Fax: 1-631-938-8127

 45-1 Ramsey Road, Shirley, NY 11967, USA

Reconstitution Reconstitute in sterile water for a stock solution.

Shipping They are shipped out with dry ice/blue ice unless customers require otherwise.

GENE INFORMATION

Gene Name CD226 CD226 molecule [Homo sapiens (human)]

Official Symbol CD226

Synonyms

CD226; CD226 molecule; CD226 antigen; DNAM 1; DNAM1; PTA1; TLISA1; adhesion glycoprotein; DNAX accessory molecule 1; DNAX accessory molecule-1; platelet and T cell activation antigen 1; T lineage-specific activation antigen 1 antigen; DNAM-1;

Gene ID 10666

mRNA Refseq NM_006566

Protein Refseq NP_006557

MIM 605397

UniProt ID Q15762

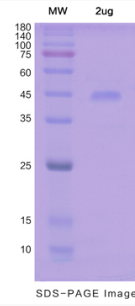
 Tel: 1-631-559-9269 1-516-512-3133

 Email: info@creative-biomart.com  Fax: 1-631-938-8127

 45-1 Ramsey Road, Shirley, NY 11967, USA



SDS-PAGE



Tel: 1-631-559-9269 1-516-512-3133

Email: info@creative-biomart.com Fax: 1-631-938-8127

45-1 Ramsey Road, Shirley, NY 11967, USA