

# Recombinant Human CD226 Protein, Myc/DDK-tagged, C13 and N15-labeled

Cat. No. CD226-5428H Lot. No. (See product label)

## SPECIFICATION

**Product Overview** CD226 MS Standard C13 and N15-labeled recombinant protein (NP\_006557) with a C-terminal MYC/DDK tag, was expressed in HEK293 cells.

**Species** Human

**Source** HEK293

**Description** This gene encodes a glycoprotein expressed on the surface of NK cells, platelets, monocytes and a subset of T cells. It is a member of the Ig-superfamily containing 2 Ig-like domains of the V-set. The protein mediates cellular adhesion of platelets and megakaryocytic cells to vascular endothelial cells. The protein also plays a role in megakaryocytic cell maturation. Alternative splicing results in multiple transcript variants.

**Molecular Mass** 38.6 kDa

**AA Sequence**

```
MDYPTLLLALLHVYRALCEEVLWHTSVPFAENMSLECVYPSMGILTQVEWFKIGTQQ
DSIAIFSPTHGMVIRKPYAERVYFLNSTMASNNMTLFFRNAEEDDVGYYSCSLYTYP
QGTWQKVIQVVQSDSFEAAVPSNSHIVSEPGKNVTLTCQPQMTWPVQAVRWEKIQ
PRQIDLLTYCNLVHGRNFTSKFPRQIVSNCSHGRWSVIVIPDVTVSDSGLYRCYLQA
SAGENETFVMRLTVAEGKTDNQYTLFVAGGTVLLLLFVISITTIIVIFLNRRRRRRERDL
FTESWDTQKAPNNYRSPISTGQPTNQSMDDTREDIYVNYPTFSRRPKTRVTRTRPL
EQKLISEEDLAANDILDYKDDDDKV
```

 Tel: 1-631-559-9269 1-516-512-3133

 Email: [info@creative-biomart.com](mailto:info@creative-biomart.com)  Fax: 1-631-938-8127

 45-1 Ramsey Road, Shirley, NY 11967, USA

<b>Purity</b>	> 80% as determined by SDS-PAGE and Coomassie blue staining
<b>Stability</b>	Stable for 3 months from receipt of products under proper storage and handling conditions.
<b>Storage</b>	Store at -80 centigrade. Avoid repeated freeze-thaw cycles.
<b>Concentration</b>	50 µg/mL as determined by BCA
<b>Storage Buffer</b>	100 mM glycine, 25 mM Tris-HCl, pH 7.3.

## GENE INFORMATION

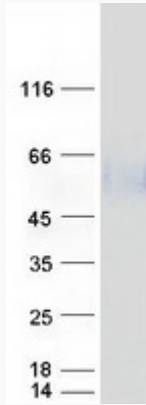
<b>Gene Name</b>	CD226 CD226 molecule [ Homo sapiens (human) ]
<b>Official Symbol</b>	CD226
<b>Synonyms</b>	CD226; CD226 molecule; CD226 antigen; DNAM 1; DNAM1; PTA1; TLISA1; adhesion glycoprotein; DNAX accessory molecule 1; DNAX accessory molecule-1; platelet and T cell activation antigen 1; T lineage-specific activation antigen 1 antigen; DNAM-1;
<b>Gene ID</b>	10666
<b>mRNA Refseq</b>	NM_006566
<b>Protein Refseq</b>	NP_006557
<b>MIM</b>	605397
<b>UniProt ID</b>	Q15762

 Tel: 1-631-559-9269 1-516-512-3133

 Email: [info@creative-biomart.com](mailto:info@creative-biomart.com)  Fax: 1-631-938-8127

 45-1 Ramsey Road, Shirley, NY 11967, USA

**SDS-PAGE**



 Tel: 1-631-559-9269 1-516-512-3133

 Email: [info@creative-biomart.com](mailto:info@creative-biomart.com)  Fax: 1-631-938-8127

 45-1 Ramsey Road, Shirley, NY 11967, USA