

## Recombinant Human CD226 Protein (Glu19-Asn247), C-mFc and 6xHis-tagged

Cat. No. CD226-583H Lot. No. (See product label)

### SPECIFICATION

<b>Product Overview</b>	Recombinant Human CD226 Protein (Glu19-Asn247) with C-mFc and 6xHis tag was expressed in HEK293.
<b>Species</b>	Human
<b>Source</b>	HEK293
<b>ProteinLength</b>	Glu19-Asn247
<b>Description</b>	This gene encodes a glycoprotein expressed on the surface of NK cells, platelets, monocytes and a subset of T cells. It is a member of the Ig-superfamily containing 2 Ig-like domains of the V-set. The protein mediates cellular adhesion of platelets and megakaryocytic cells to vascular endothelial cells. The protein also plays a role in megakaryocytic cell maturation. Alternative splicing results in multiple transcript variants.
<b>Form</b>	Lyophilized
<b>Molecular Mass</b>	53.5 kDa
<b>Purity</b>	> 95% as determined by SDS-PAGE and Coomassie blue staining.
<b>Storage</b>	Store at -80 centigrade for 12 months (Avoid repeated freezing and thawing)

 Tel: 1-631-559-9269 1-516-512-3133

 Email: [info@creative-biomart.com](mailto:info@creative-biomart.com)  Fax: 1-631-938-8127

 45-1 Ramsey Road, Shirley, NY 11967, USA

**Storage Buffer** Lyophilized from sterile PBS, pH 7.4. Normally 5 % - 48 % trehalose is added as protectants before lyophilization.

## GENE INFORMATION

**Gene Name** CD226 CD226 molecule [ Homo sapiens (human) ]

**Official Symbol** CD226

**Synonyms** CD226; CD226 molecule; CD226 antigen; DNAM 1; DNAM1; PTA1; TLISA1; adhesion glycoprotein; DNAX accessory molecule 1; DNAX accessory molecule-1; platelet and T cell activation antigen 1; T lineage-specific activation antigen 1 antigen; DNAM-1;

**Gene ID** 10666

**mRNA Refseq** NM\_006566

**Protein Refseq** NP\_006557

**MIM** 605397

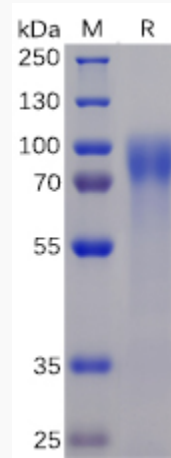
**UniProt ID** Q15762

 Tel: 1-631-559-9269 1-516-512-3133

 Email: [info@creative-biomart.com](mailto:info@creative-biomart.com)  Fax: 1-631-938-8127

 45-1 Ramsey Road, Shirley, NY 11967, USA

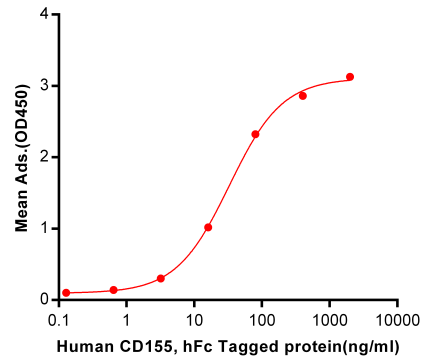
**SDS-PAGE**



**Activity**

**Human DNAM-1, mFc-His Tagged protein ELISA**

0.2 µg of Human DNAM-1, mFc-His Tagged protein per well



 Tel: 1-631-559-9269 1-516-512-3133

 Email: [info@creative-biomart.com](mailto:info@creative-biomart.com)  Fax: 1-631-938-8127

 45-1 Ramsey Road, Shirley, NY 11967, USA