

Recombinant Human CD226 protein, Fc-tagged

Cat. No. CD226-635H **Lot. No.** (See product label)

SPECIFICATION

Product Overview	Recombinant Human CD226 protein (Glu19-Asn247), fused to human IgG1 Fc tag at C-terminus, was expressed in human 293 cells (HEK293).
Species	Human
Source	HEK293
ProteinLength	229
Description	DNAX accessory molecule 1 (DNAM-1), a single-pass type I membrane protein, is also known as CD226 antigen and platelet and T cell activation antigen 1 (PTA1), which contains 2 Ig-like C2-type (immunoglobulin-like) domains. DNAM-1 is a ~65 kDa glycoprotein expressed on the surface of natural killer cells, platelets, monocytes and a subset of T cells. DNAM-1 mediates cellular adhesion to other cells bearing its ligands, CD112 and CD155, and cross-linking DNAM-1 with antibodies causes cellular activation. Furthermore, DNAM-1 can interact with PVR and PVRL2.
Form	Lyophilized from 0.22 um filtered solution in Tris with Glycine, Arginine and NaCl, pH7.5, 10% trehalose.
Molecular Mass	The protein has a calculated MW of 52.6 kDa. The protein migrates as 80-90 kDa under reducing (R) condition (SDS-PAGE) due to glycosylation.
Endotoxin	Less than 1.0 EU per ug by the LAL method.

 Tel: 1-631-559-9269 1-516-512-3133

 Email: info@creative-biomart.com  Fax: 1-631-938-8127

 45-1 Ramsey Road, Shirley, NY 11967, USA

Purity	>95% as determined by SDS-PAGE.
Storage	<p>For long term storage, the product should be stored at lyophilized state at -20 centigrade or lower.</p> <p>Please avoid repeated freeze-thaw cycles.</p> <p>This product is stable after storage at:</p> <p>-20 centigrade to -70 centigrade for 12 months in lyophilized state; -70 centigrade for 3 months under sterile conditions after reconstitution.</p>
Reconstitution	It is recommended that sterile water be added to the vial to prepare a stock solution of 0.2 ug/ul. Centrifuge the vial at 4°C before opening to recover the entire contents.

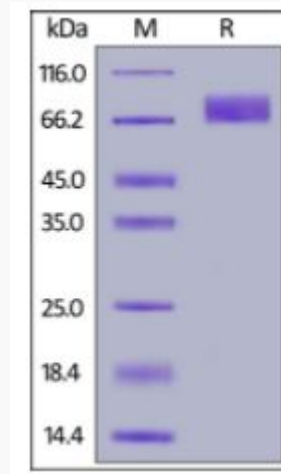
GENE INFORMATION

Gene Name	CD226
Official Symbol	CD226
Synonyms	CD226; CD226 molecule; CD226 antigen; DNAM 1; DNAM1; PTA1; TLISA1; adhesion glycoprotein; DNAX accessory molecule 1; DNAX accessory molecule-1; platelet and T cell activation antigen 1; T lineage-specific activation antigen 1 antigen; DNAM-1
Gene ID	10666
mRNA Refseq	NM_006566
Protein Refseq	NP_006557
MIM	605397

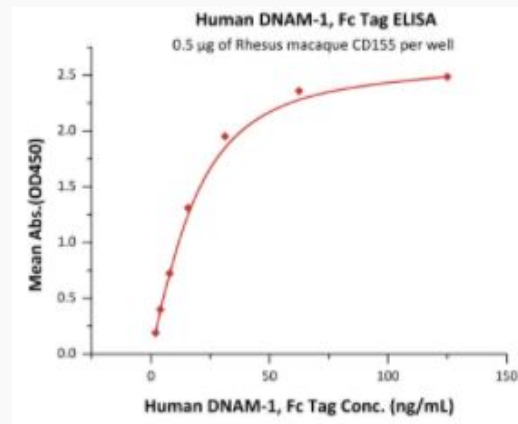
 Tel: 1-631-559-9269 1-516-512-3133

 Email: info@creative-biomart.com  Fax: 1-631-938-8127

 45-1 Ramsey Road, Shirley, NY 11967, USA

UniProt ID
Q15762
SDS-PAGE of CD226-635H


Human DNAM-1, Fc Tag on SDS-PAGE under reducing (R) condition. The gel was stained overnight with Coomassie Blue. The purity of the protein is greater than 95%.

Bioactivity-ELISA of CD226-635H


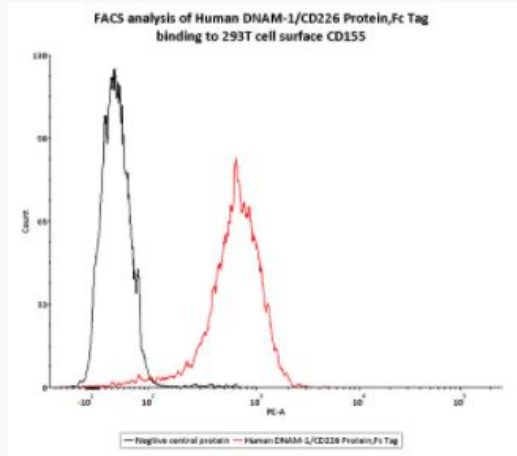
Immobilized Rhesus macaque CD155 at 5 µg/mL (100 µL/well) can bind Human DNAM-1, Fc Tag with a linear range of 2-31 ng/mL (QC tested).

 Tel: 1-631-559-9269 1-516-512-3133

 Email: info@creative-biomart.com  Fax: 1-631-938-8127

 45-1 Ramsey Road, Shirley, NY 11967, USA

**Bioactivity-FACS of
CD226-635H**



FACS assay shows that recombinant Human DNAM-1 Protein, Fc Tag can bind to 293T cell overexpressing human CD155. The concentration of DNAM-1 used is 0.03 $\mu\text{g/ml}$ (Routinely tested).

 Tel: 1-631-559-9269 1-516-512-3133

 Email: info@creative-biomart.com  Fax: 1-631-938-8127

 45-1 Ramsey Road, Shirley, NY 11967, USA