

Recombinant Human CD226 protein, hFc-tagged

Cat. No. CD226-6744H Lot. No. (See product label)

SPECIFICATION

Product Overview	Recombinant Human CD226 protein(Q15762)(Glu19-Asn247), fused with C-terminal hFc tag, was expressed in HEK293.
Species	Human
Source	HEK293
ProteinLength	Glu19-Asn247
Tag	C-hFc
Form	Lyophilized from 0.22µm filtered solution in PBS (pH 7.4). Normally 5% trehalose is added as protectant before lyophilization.
Bio-activity	Immobilized Biotinylated Human CD155, His Tag at 1µg/ml (100µl/well) on the plate. Dose response curve for Human DNAM-1, hFc Tag with the EC50 of 10.6ng/ml determined by ELISA.
Molecular Mass	The protein has a predicted MW of 52.8 kDa. Due to glycosylation, the protein migrates to 70-100 kDa based on Tris-Bis PAGE result.
Endotoxin	Less than 1EU per µg by the LAL method.
Purity	> 95% as determined by Tris-Bis PAGE; > 95% as determined by HPLC

 Tel: 1-631-559-9269 1-516-512-3133

 Email: info@creative-biomart.com  Fax: 1-631-938-8127

 45-1 Ramsey Road, Shirley, NY 11967, USA

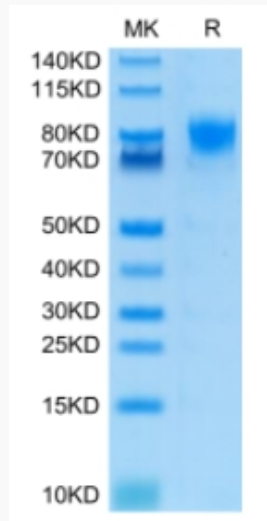
Storage	Reconstituted protein stable at -80°C for 12 months, 4°C for 1 week. Use a manual defrost freezer and avoid repeated freeze-thaw cycles.
Reconstitution	Centrifuge tubes before opening. Reconstituting to a concentration more than 100 µg/ml is recommended. Dissolve the lyophilized protein in distilled water.
GENE INFORMATION	
Gene Name	CD226 CD226 molecule [Homo sapiens]
Official Symbol	CD226
Synonyms	CD226; CD226 molecule; CD226 antigen; DNAM 1; DNAM1; PTA1; TLISA1; adhesion glycoprotein; DNAX accessory molecule 1; DNAX accessory molecule-1; platelet and T cell activation antigen 1; T lineage-specific activation antigen 1 antigen; DNAM-1;
Gene ID	10666
mRNA Refseq	NM_006566
Protein Refseq	NP_006557
MIM	605397
UniProt ID	Q15762

 Tel: 1-631-559-9269 1-516-512-3133

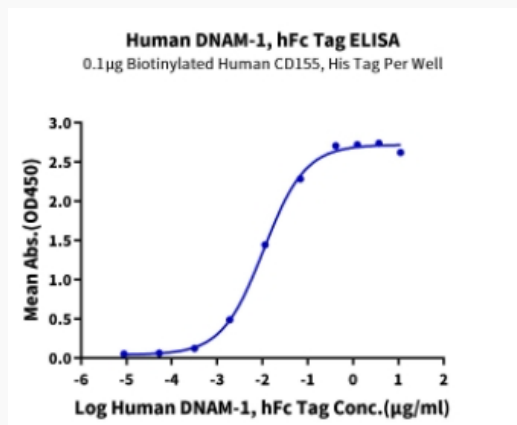
 Email: info@creative-biomart.com  Fax: 1-631-938-8127

 45-1 Ramsey Road, Shirley, NY 11967, USA

Tris-Bis PAGE



ELISA Data



 Tel: 1-631-559-9269 1-516-512-3133

 Email: info@creative-biomart.com  Fax: 1-631-938-8127

 45-1 Ramsey Road, Shirley, NY 11967, USA