

Recombinant Human CD24 protein, mFc-tagged

Cat. No. CD24-063H Lot. No. (See product label)

SPECIFICATION

Product Overview	Human CD24 is expressed from mammalian with a mFc tag at the C-terminal. It contains Ser27-Gly59.
Species	Human
Source	HEK293
ProteinLength	It contains Ser27-Gly59.
Description	CD24 is a sialoglycoprotein expressed at the surface of most B lymphocytes and differentiating neuroblasts. It is also expressed on neutrophils and neutrophil precursors from the myelocyte stage onwards. The potential for targeting CD24 in cancer therapy seems promising, as CD24 is overexpressed in many human cancers.
Form	Supplied as 0.22um filtered solution in PBS (pH 7.4).
Molecular Mass	The protein has a predicted MW of 29.5 kDa. Due to glycosylation, the protein migrates to 48- 58KDa based on Bis-Tris PAGE result.
Endotoxin	Less than 0.001EU per ug by the LAL method.
Purity	> 95% as determined by SDS-PAGE; > 95% as determined by HPLC
Storage	The product should be stored at -70°C. Please do not repeated freeze-thaw cycles.

 Tel: 1-631-559-9269 1-516-512-3133

 Email: info@creative-biomart.com  Fax: 1-631-938-8127

 45-1 Ramsey Road, Shirley, NY 11967, USA

Reconstitution It is recommended that sterile water be added to the vial to prepare a stock solution of 0.2 ug/ul. Centrifuge the vial at 4°C before opening to recover the entire contents.

GENE INFORMATION

Gene Name CD24 CD24 molecule [Homo sapiens]

Official Symbol CD24

Synonyms CD 24; CD24 antigen (small cell lung carcinoma cluster 4 antigen); CD24 antigen; CD24 molecule; CD24; CD24A; CD24Asignal transducer CD24; FLJ22950; FLJ43543; MGC75043; Small cell lung carcinoma cluster 4 antigen

Gene ID 100133941

mRNA Refseq NM_013230

Protein Refseq NP_037362

MIM 600074

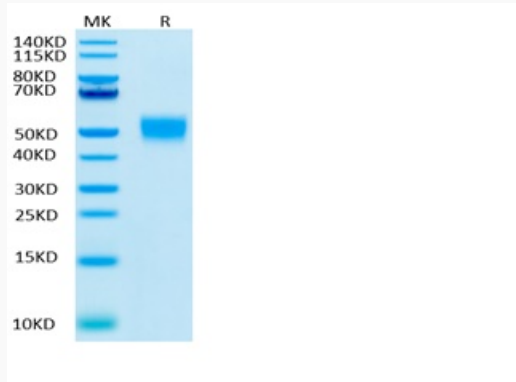
UniProt ID P25063

 Tel: 1-631-559-9269 1-516-512-3133

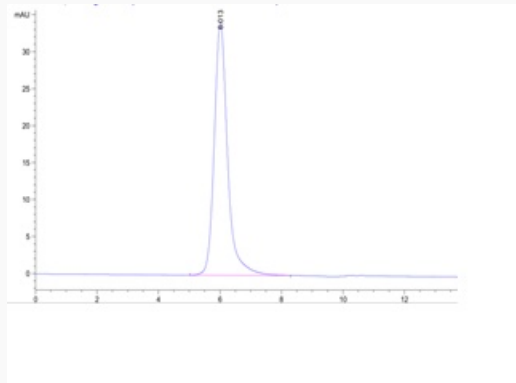
 Email: info@creative-biomart.com  Fax: 1-631-938-8127

 45-1 Ramsey Road, Shirley, NY 11967, USA

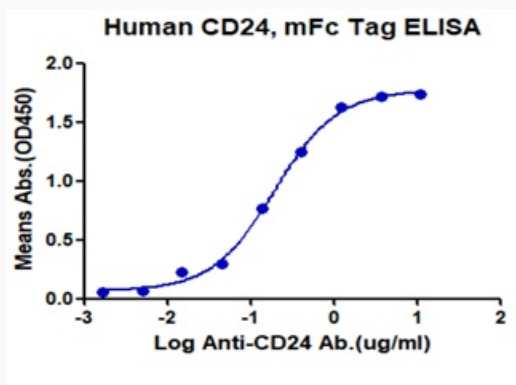
Tris-Bis PAGE



HPLC data



ELISA data



Tel: 1-631-559-9269 1-516-512-3133

Email: info@creative-biomart.com Fax: 1-631-938-8127

45-1 Ramsey Road, Shirley, NY 11967, USA