

## Recombinant Human CD24 Protein, GST-Tagged

**Cat. No.** CD24-0751H    **Lot. No.** (See product label)

### SPECIFICATION

<b>Product Overview</b>	Human CD24 full-length ORF (AAH07674, 28 a.a. - 80 a.a.) recombinant protein with GST-tag at N-terminal.
<b>Species</b>	Human
<b>Source</b>	Wheat Germ
<b>Description</b>	This gene encodes a sialoglycoprotein that is expressed on mature granulocytes and B cells and modulates growth and differentiation signals to these cells. The precursor protein is cleaved to a short 32 amino acid mature peptide which is anchored via a glycosyl phosphatidylinositol (GPI) link to the cell surface. This gene was missing from previous genome assemblies, but is properly located on chromosome 6. Non-transcribed pseudogenes have been designated on chromosomes 1, 15, 20, and Y. Alternative splicing results in multiple transcript variants. [provided by RefSeq, Apr 2014]
<b>Molecular Mass</b>	31.57 kDa
<b>AA Sequence</b>	ETTTGTSSNSSQSTSNSGLAPNPTNATTKAAGGALQSTASLFVVVSLLLHLYS
<b>Applications</b>	Enzyme-linked Immunoabsorbent Assay Western Blot (Recombinant protein) Antibody Production Protein Array

 Tel: 1-631-559-9269    1-516-512-3133

 Email: [info@creative-biomart.com](mailto:info@creative-biomart.com)     Fax: 1-631-938-8127

 45-1 Ramsey Road, Shirley, NY 11967, USA

**Storage** Store at -80 centigrade. Aliquot to avoid repeated freezing and thawing.

**Storage Buffer** 50 mM Tris-HCl, 10 mM reduced Glutathione, pH=8.0 in the elution buffer.

## GENE INFORMATION

**Gene Name** CD24 CD24 molecule [ Homo sapiens ]

**Official Symbol** CD24

**Synonyms** CD24; CD24 molecule; CD24 antigen (small cell lung carcinoma cluster 4 antigen); signal transducer CD24; CD24A; FLJ22950; FLJ43543; MGC75043;

**Gene ID** 100133941

**mRNA Refseq** NM\_013230

**Protein Refseq** NP\_037362

**MIM** 600074

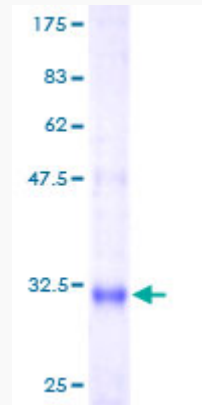
**UniProt ID** P25063

 Tel: 1-631-559-9269 1-516-512-3133

 Email: [info@creative-biomart.com](mailto:info@creative-biomart.com)  Fax: 1-631-938-8127

 45-1 Ramsey Road, Shirley, NY 11967, USA

**Quality Control  
Testing**



12.5% SDS-PAGE Stained with Coomassie Blue.

 Tel: 1-631-559-9269 1-516-512-3133

 Email: [info@creative-biomart.com](mailto:info@creative-biomart.com)  Fax: 1-631-938-8127

 45-1 Ramsey Road, Shirley, NY 11967, USA