

# Recombinant Human CD24 protein, hFc-tagged, Biotinylated

**Cat. No.** CD24-1721H    **Lot. No.** (See product label)

## SPECIFICATION

<b>Product Overview</b>	Biotinylated Recombinant Human CD24 protein(P25063-1)(Ser27-Gly59), fused with C-terminal hFc tag, was expressed in HEK293.
<b>Species</b>	Human
<b>Source</b>	HEK293
<b>ProteinLength</b>	Ser27-Gly59
<b>Tag</b>	C-hFc
<b>Conjugation/Label</b>	Biotin
<b>Form</b>	Supplied as 0.22µm filtered solution in PBS (pH 7.4).
<b>Bio-activity</b>	Immobilized Anti-CD24 Antibody, hFc Tag at 2µg/ml (100µl/well) on the plate. Dose response curve for Biotinylated Human CD24, hFc Tag with the EC50 of 0.38µg/ml determined by ELISA.
<b>Molecular Mass</b>	The protein has a predicted MW of 29.9 kDa. Due to glycosylation, the protein migrates to 50-55 kDa based on Tris-Bis PAGE result.
<b>Endotoxin</b>	Less than 1EU per µg by the LAL method.
<b>Purity</b>	> 95% as determined by Tris-Bis PAGE; > 95% as determined by HPLC.

 Tel: 1-631-559-9269    1-516-512-3133

 Email: [info@creative-biomart.com](mailto:info@creative-biomart.com)     Fax: 1-631-938-8127

 45-1 Ramsey Road, Shirley, NY 11967, USA

<b>Storage</b>	Valid for 12 months from date of receipt when stored at -80°C.; Recommend to aliquot the protein into smaller quantities for optimal storage. Please do not repeated freeze-thaw cycles.
<b>Reconstitution</b>	It is recommended that sterile water be added to the vial to prepare a stock solution of 0.2 ug/ul. Centrifuge the vial at 4°C before opening to recover the entire contents.
<b>Conjugation</b>	Biotin

## GENE INFORMATION

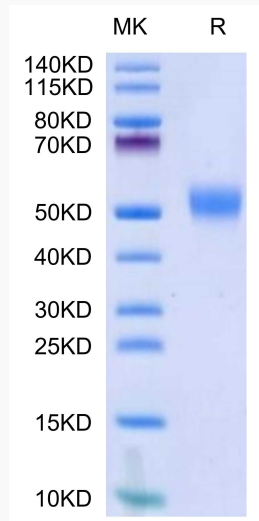
<b>Gene Name</b>	CD24 CD24 molecule [ Homo sapiens ]
<b>Official Symbol</b>	CD24
<b>Synonyms</b>	CD24; CD24 molecule; CD24 antigen (small cell lung carcinoma cluster 4 antigen); signal transducer CD24; CD24A; FLJ22950; FLJ43543; MGC75043;
<b>Gene ID</b>	100133941
<b>mRNA Refseq</b>	NM_013230
<b>Protein Refseq</b>	NP_037362
<b>MIM</b>	600074
<b>UniProt ID</b>	P25063

 Tel: 1-631-559-9269 1-516-512-3133

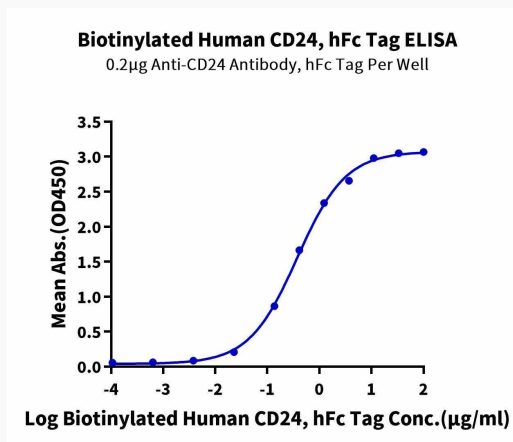
 Email: [info@creative-biomart.com](mailto:info@creative-biomart.com)  Fax: 1-631-938-8127

 45-1 Ramsey Road, Shirley, NY 11967, USA

**Tris-Bis PAGE**



**ELISA**



 Tel: 1-631-559-9269 1-516-512-3133

 Email: [info@creative-biomart.com](mailto:info@creative-biomart.com)  Fax: 1-631-938-8127

 45-1 Ramsey Road, Shirley, NY 11967, USA