

# CD24 protein-coupled magnetic MicroBeads

**Cat. No.** CD24-22M    **Lot. No.** (See product label)

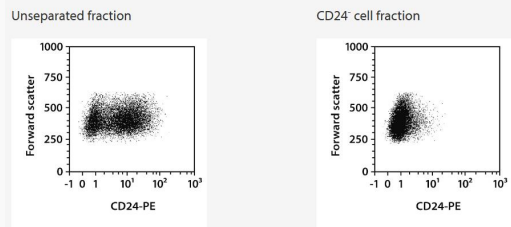
## SPECIFICATION

**Species**                      Human

**Capacity**                    for 1×10<sup>9</sup> total cells


### Background

The CD24 MicroBead Kit has been developed and optimized for the depletion of CD24-expressing cells from cancer cell lines or single-cell suspensions created from solid tissues. It can also be used for positive selection of cancer stem cells from cancer cell lines or single-cell suspensions created from solid tissues.



### Analysis

CD24<sup>+</sup> cells were depleted from the CML cell line K562 using the CD24 MicroBead Kit, an LD Column, and a QuadroMACS Separator. Cells were fluorescently labeled with CD24-PE and analyzed by flow cytometry using the MACSQuant Analyzer. Cell debris and dead cells were excluded from the analysis based on scatter signals and propidium iodide fluorescence.

 Tel: 1-631-559-9269    1-516-512-3133

 Email: [info@creative-biomart.com](mailto:info@creative-biomart.com)     Fax: 1-631-938-8127

 45-1 Ramsey Road, Shirley, NY 11967, USA