

## Recombinant Human CD24 protein, Llama Fc-tagged

Cat. No. CD24-479H Lot. No. (See product label)

### SPECIFICATION

<b>Product Overview</b>	Recombinant Human CD24 protein(P25063)(Ser27-Gly59), fused with C-terminal Llama Fc tag, was expressed in HEK293.
<b>Species</b>	Human
<b>Source</b>	HEK293
<b>ProteinLength</b>	Ser27-Gly59
<b>Tag</b>	C-Llama Fc
<b>Form</b>	Lyophilized from 0.22µm filtered solution in PBS (pH 7.4). Normally 5% trehalose is added as protectant before lyophilization.
<b>Bio-activity</b>	Immobilized Human CD24, Llama Fc Tag at 2µg/ml (100µl/well) on the plate. Dose response curve for Biotinylated Anti-CD24 Antibody, hFc Tag with the EC50 of 0.18µg/ml determined by ELISA.
<b>Molecular Mass</b>	The protein has a predicted MW of 29.5 kDa. Due to glycosylation, the protein migrates to 48-58 kDa based on Tris-Bis PAGE result.
<b>Endotoxin</b>	Less than 1EU per µg by the LAL method.
<b>Purity</b>	> 95% as determined by Tris-Bis PAGE; > 94% as determined by HPLC

 Tel: 1-631-559-9269 1-516-512-3133

 Email: [info@creative-biomart.com](mailto:info@creative-biomart.com)  Fax: 1-631-938-8127

 45-1 Ramsey Road, Shirley, NY 11967, USA

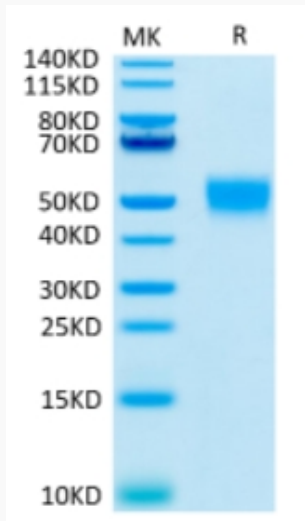
<b>Storage</b>	Reconstituted protein stable at -80°C for 12 months, 4°C for 1 week. Use a manual defrost freezer and avoid repeated freeze-thaw cycles.
<b>Reconstitution</b>	Centrifuge tubes before opening. Reconstituting to a concentration more than 100 µg/ml is recommended. Dissolve the lyophilized protein in distilled water.
<b>GENE INFORMATION</b>	
<b>Gene Name</b>	CD24 CD24 molecule [ Homo sapiens ]
<b>Official Symbol</b>	CD24
<b>Synonyms</b>	CD24; CD24 molecule; CD24 antigen (small cell lung carcinoma cluster 4 antigen); signal transducer CD24; CD24A; FLJ22950; FLJ43543; MGC75043;
<b>Gene ID</b>	100133941
<b>mRNA Refseq</b>	NM_013230
<b>Protein Refseq</b>	NP_037362
<b>MIM</b>	600074
<b>UniProt ID</b>	P25063

 Tel: 1-631-559-9269 1-516-512-3133

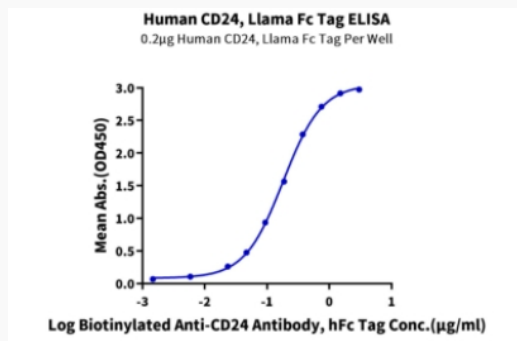
 Email: [info@creative-biomart.com](mailto:info@creative-biomart.com)  Fax: 1-631-938-8127

 45-1 Ramsey Road, Shirley, NY 11967, USA

**Tris-Bis PAGE**



**ELISA Data**



 Tel: 1-631-559-9269 1-516-512-3133

 Email: [info@creative-biomart.com](mailto:info@creative-biomart.com)  Fax: 1-631-938-8127

 45-1 Ramsey Road, Shirley, NY 11967, USA