

## Recombinant Human CD24 protein, mFc-tagged, Biotinylated(Primary Amine Labeling)

**Cat. No.** CD24-5743H    **Lot. No.** (See product label)

### SPECIFICATION

|                          |  |
|--------------------------|--|
| <b>Product Overview</b>  | Biotinylated Recombinant Human CD24 protein(P25063-1)(Ser27-Gly59)(Primary Amine Labeling), fused with C-terminal mFc tag, was expressed in HEK293.                          |
| <b>Species</b>           | Human  |
| <b>Source</b>            | HEK293   |
| <b>ProteinLength</b>     | Ser27-Gly59  |
| <b>Tag</b>               | C-mFc  |
| <b>Conjugation/Label</b> | Biotin; Primary Amine  |
| <b>Form</b>              | Lyophilized from 0.22µm filtered solution in PBS (pH 7.4). Normally 5% trehalose is added as protectant before lyophilization.   |
| <b>Bio-activity</b>      | Immobilized Anti-CD24 Antibody at 2µg/ml (100µl/Well) on the plate. Dose response curve for Biotinylated Human CD24, mFc Tag with the EC50 of 0.31µg/ml determined by ELISA. |
| <b>Molecular Mass</b>    | The protein has a predicted MW of 29.5 kDa. Due to glycosylation, the protein migrates to 48-58 kDa based on Tris-Bis PAGE result.   |
| <b>Endotoxin</b>         | Less than 1EU per µg by the LAL method.  |

 Tel: 1-631-559-9269    1-516-512-3133

 Email: [info@creative-biomart.com](mailto:info@creative-biomart.com)     Fax: 1-631-938-8127

 45-1 Ramsey Road, Shirley, NY 11967, USA

|                       |   |
|-----------------------|---|
| <b>Purity</b>         | > 95% as determined by Tris-Bis PAGE; > 95% as determined by HPLC   |
| <b>Storage</b>        | Reconstituted protein stable at -80°C for 12 months, 4°C for 1 week. Use a manual defrost freezer and avoid repeated freeze-thaw cycles.                    |
| <b>Reconstitution</b> | Centrifuge tubes before opening. Reconstituting to a concentration more than 100 µg/ml is recommended. Dissolve the lyophilized protein in distilled water. |
| <b>Conjugation</b>    | Biotin  |

## GENE INFORMATION

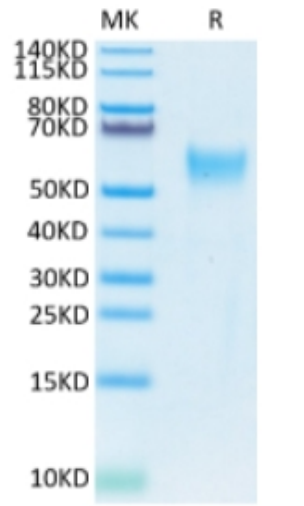
|                        |   |
|------------------------|---|
| <b>Gene Name</b>       | CD24 CD24 molecule [ Homo sapiens ]   |
| <b>Official Symbol</b> | CD24  |
| <b>Synonyms</b>        | CD24; CD24 molecule; CD24 antigen (small cell lung carcinoma cluster 4 antigen); signal transducer CD24; CD24A; FLJ22950; FLJ43543; MGC75043; |
| <b>Gene ID</b>         | 100133941   |
| <b>mRNA Refseq</b>     | NM_013230   |
| <b>Protein Refseq</b>  | NP_037362   |
| <b>MIM</b>             | 600074  |
| <b>UniProt ID</b>      | P25063  |

 Tel: 1-631-559-9269 1-516-512-3133

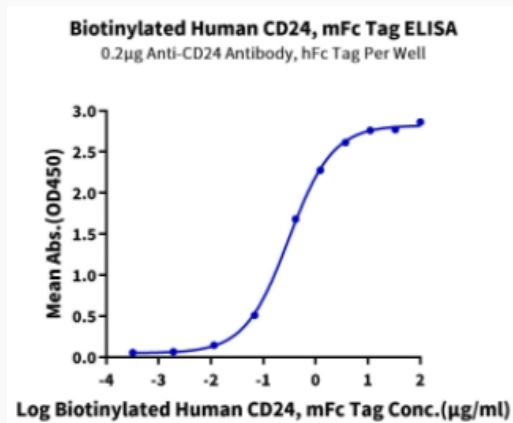
 Email: [info@creative-biomart.com](mailto:info@creative-biomart.com)  Fax: 1-631-938-8127

 45-1 Ramsey Road, Shirley, NY 11967, USA

**Tris-Bis PAGE**



**ELISA Data**



 Tel: 1-631-559-9269 1-516-512-3133

 Email: [info@creative-biomart.com](mailto:info@creative-biomart.com)  Fax: 1-631-938-8127

 45-1 Ramsey Road, Shirley, NY 11967, USA