

Recombinant Human CD244 protein, His-Avi-tagged, Biotinylated

Cat. No. CD244-110H Lot. No. (See product label)

SPECIFICATION

Product Overview	Biotinylated Recombinant Human CD244 protein(Q9BZW8-2)(Cys22-Arg221), fused with C-terminal His and Avi tag, was expressed in HEK293.
Species	Human
Source	HEK293
ProteinLength	Cys22-Arg221
Tag	C-His-Avi
Conjugation/Label	Biotin
Form	Supplied as 0.22µm filtered solution in PBS (pH 7.4).
Bio-activity	Immobilized Biotinylated Human 2B4, His Tag at 0.5ug/ml (100ul/well) on the streptavidin precoated plate (5ug/ml). Dose response curve for Human CD48, hFc Tag with the EC50 of 29.3ng/ml determined by ELISA.
Molecular Mass	The protein has a predicted MW of 24.9 kDa. Due to glycosylation, the protein migrates to 48-70 kDa based on Tris-Bis PAGE result.
Endotoxin	Less than 1EU per µg by the LAL method.

 Tel: 1-631-559-9269 1-516-512-3133

 Email: info@creative-biomart.com  Fax: 1-631-938-8127

 45-1 Ramsey Road, Shirley, NY 11967, USA

Purity	> 95% as determined by Tris-Bis PAGE;> 95% as determined by HPLC
Storage	Valid for 12 months from date of receipt when stored at -80°C. Recommend to aliquot the protein into smaller quantities for optimal storage. Please do not repeated freeze-thaw cycles.
Reconstitution	It is recommended that sterile water be added to the vial to prepare a stock solution of 0.2 ug/ul. Centrifuge the vial at 4°C before opening to recover the entire contents.
Conjugation	Biotin

GENE INFORMATION

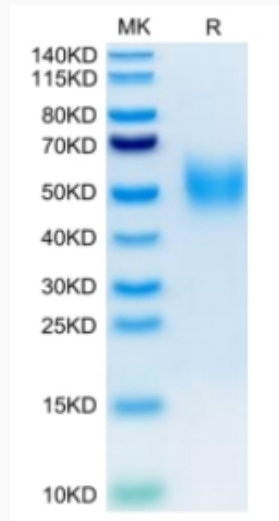
Gene Name	CD244 CD244 molecule, natural killer cell receptor 2B4 [Homo sapiens]
Official Symbol	CD244
Synonyms	CD244; CD244 molecule, natural killer cell receptor 2B4; CD244 natural killer cell receptor 2B4 , natural killer cell receptor 2B4; natural killer cell receptor 2B4; 2B4; NAIL; NKR2B4; Nmrk; SLAMF4; h2B4; NK cell activation-inducing ligand; NK cell type I receptor protein 2B4; NK cell activation inducing ligand NAIL;
Gene ID	51744
mRNA Refseq	NM_001166663
Protein Refseq	NP_001160135
MIM	605554
UniProt ID	Q9BZW8

 Tel: 1-631-559-9269 1-516-512-3133

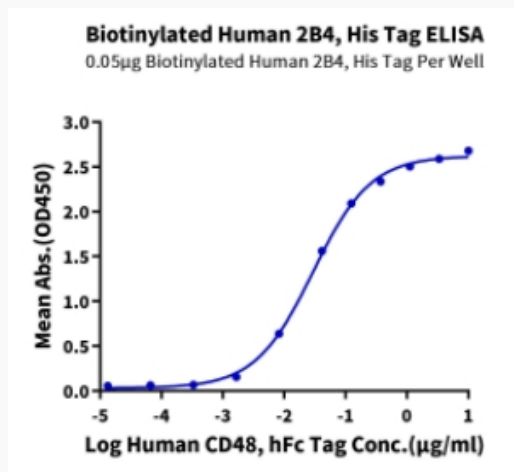
 Email: info@creative-biomart.com  Fax: 1-631-938-8127

 45-1 Ramsey Road, Shirley, NY 11967, USA

Tris-Bis PAGE



ELISA Data



 Tel: 1-631-559-9269 1-516-512-3133

 Email: info@creative-biomart.com  Fax: 1-631-938-8127

 45-1 Ramsey Road, Shirley, NY 11967, USA