

## Recombinant Human CD244 protein, His-tagged

Cat. No. CD244-2829H Lot. No. (See product label)

### SPECIFICATION

<b>Product Overview</b>	Recombinant Human CD244 protein(Q9BZW8-2)(Cys22-Arg221), fused with C-terminal His tag, was expressed in HEK293.
<b>Species</b>	Human
<b>Source</b>	HEK293
<b>ProteinLength</b>	Cys22-Arg221
<b>Tag</b>	C-His
<b>Form</b>	Lyophilized from 0.22µm filtered solution in PBS (pH 7.4). Normally 5% trehalose is added as protectant before lyophilization.
<b>Bio-activity</b>	Immobilized Human 2B4, His Tag at 1µg/ml (100µl/well) on the plate. Dose response curve for Human CD48, hFc Tag with the EC50 of 0.34µg/ml determined by ELISA.
<b>Molecular Mass</b>	The protein has a predicted MW of 23.1 kDa. Due to glycosylation, the protein migrates to 45-70 kDa based on Tris-Bis PAGE result.
<b>Endotoxin</b>	Less than 1EU per µg by the LAL method.
<b>Purity</b>	> 95% as determined by Tris-Bis PAGE; > 95% as determined by HPLC
<b>Storage</b>	Reconstituted protein stable at -80°C for 12 months, 4°C for 1 week. Use a manual

 Tel: 1-631-559-9269 1-516-512-3133

 Email: [info@creative-biomart.com](mailto:info@creative-biomart.com)  Fax: 1-631-938-8127

 45-1 Ramsey Road, Shirley, NY 11967, USA

defrost freezer and avoid repeated freeze-thaw cycles.

**Reconstitution**

Centrifuge tubes before opening. Reconstituting to a concentration more than 100 µg/ml is recommended. Dissolve the lyophilized protein in distilled water.

## GENE INFORMATION

**Gene Name** [CD244 CD244 molecule, natural killer cell receptor 2B4 \[ Homo sapiens \]](#)

**Official Symbol** [CD244](#)

**Synonyms**

CD244; CD244 molecule, natural killer cell receptor 2B4; CD244 natural killer cell receptor 2B4 , natural killer cell receptor 2B4; natural killer cell receptor 2B4; 2B4; NAIL; NKR2B4; Nmrk; SLAMF4; h2B4; NK cell activation-inducing ligand; NK cell type I receptor protein 2B4; NK cell activation inducing ligand NAIL;

**Gene ID** [51744](#)

**mRNA Refseq** [NM\\_001166663](#)

**Protein Refseq** [NP\\_001160135](#)

**MIM** [605554](#)

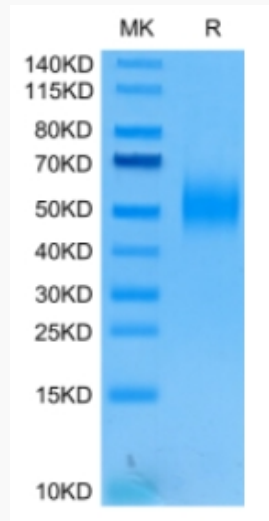
**UniProt ID** [Q9BZW8](#)

 Tel: 1-631-559-9269 1-516-512-3133

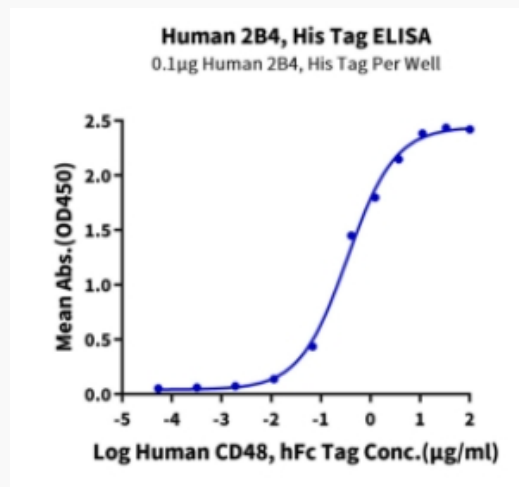
 Email: [info@creative-biomart.com](mailto:info@creative-biomart.com)  Fax: 1-631-938-8127

 45-1 Ramsey Road, Shirley, NY 11967, USA

**Tris-Bis PAGE**



**ELISA Data**



 Tel: 1-631-559-9269 1-516-512-3133

 Email: [info@creative-biomart.com](mailto:info@creative-biomart.com)  Fax: 1-631-938-8127

 45-1 Ramsey Road, Shirley, NY 11967, USA