

## Recombinant Human CD247 Protein (Met1-Lys30), C-His tagged

Cat. No. CD247-5292H Lot. No. (See product label)

### SPECIFICATION

<b>Product Overview</b>	Recombinant human CD247 (Met1-Lys30) fused with the C-terminal His tag was expressed in Mammalian cells.
<b>Species</b>	Human
<b>Source</b>	Mammalian Cells
<b>ProteinLength</b>	Met1-Lys30
<b>Form</b>	Lyophilized powder/frozen liquid
<b>Molecular Mass</b>	3.41 kDa
<b>Endotoxin</b>	< 1.0 EU/μg of the protein as determined by the LAL method.
<b>Purity</b>	>90% as determined by SDS-PAGE.
<b>Notes</b>	For research use only.
<b>Storage</b>	Use a manual defrost freezer and avoid repeated freeze thaw cycles. Store at 2 to 8 centigrade for one week. Store at -20 to -80 centigrade for twelve months from the date of receipt.
<b>Storage Buffer</b>	Supplied as solution form in PBS or lyophilized from PBS.

 Tel: 1-631-559-9269 1-516-512-3133

 Email: [info@creative-biomart.com](mailto:info@creative-biomart.com)  Fax: 1-631-938-8127

 45-1 Ramsey Road, Shirley, NY 11967, USA

**Reconstitution** Reconstitute in sterile water for a stock solution.

**Shipping** They are shipped out with dry ice/blue ice unless customers require otherwise.

## GENE INFORMATION

**Gene Name** [CD247 CD247 molecule \[ Homo sapiens \(human\) \]](#)

**Official Symbol** [CD247](#)

**Synonyms**

CD247; CD247 molecule; CD3Z, CD3z antigen, zeta polypeptide (TiT3 complex), CD247 antigen; T-cell surface glycoprotein CD3 zeta chain; CD3H; CD3Q; CD3zeta chain; TCR zeta chain; CD247 antigen, zeta subunit; T-cell receptor T3 zeta chain; CD3Z antigen, zeta polypeptide (TiT3 complex); T-cell antigen receptor complex, zeta subunit of CD3; T3Z; CD3Z; TCRZ; CD3-ZETA;

**Gene ID** [919](#)

**mRNA Refseq** [NM\\_000734](#)

**Protein Refseq** [NP\\_000725](#)

**MIM** [186780](#)

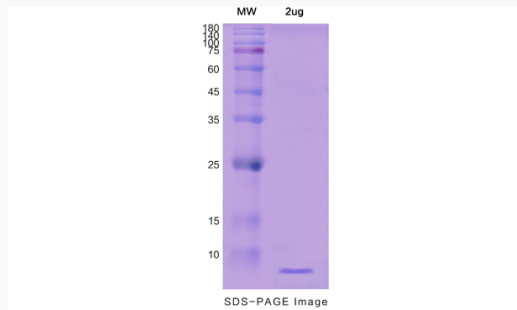
**UniProt ID** [P20963](#)

 Tel: 1-631-559-9269 1-516-512-3133

 Email: [info@creative-biomart.com](mailto:info@creative-biomart.com)  Fax: 1-631-938-8127

 45-1 Ramsey Road, Shirley, NY 11967, USA

## SDS-PAGE



 Tel: 1-631-559-9269 1-516-512-3133

 Email: [info@creative-biomart.com](mailto:info@creative-biomart.com)  Fax: 1-631-938-8127

 45-1 Ramsey Road, Shirley, NY 11967, USA