

Recombinant Human CD247 protein, His-tagged

Cat. No. CD247-7091H Lot. No. (See product label)

SPECIFICATION

Product Overview	Recombinant Human CD247 (Met1~Leu160 (Accession # P20963)) protein is produced by E. coli expression system. This protein is fused with a His tag at the N-terminal.
Species	Human
Source	E.coli
ProteinLength	Met1-Leu160
Form	PBS, pH7.4, containing 0.01% SKL, 1mM DTT, 5% Trehalose and Proclin300.
Molecular Mass	Predicted Molecular Mass: 19.9 kDa
AA Sequence	MGHHHHHHSGSEFMKWKALFTAAILQAQLPITEAQSFGLLDPKLCYLLDGILFIYGVIL TALFLRVKFSRSADAPAYQQGQNQLYNELNLGRREEYDVLDKRRGRDPEMGGKPQ RRKNPQEGLYNELQKDKMA EAYSEIGMKGERRRGKGHGHDGLYQGLSTATKDTYDAL HMQAL
Endotoxin	<1.0EU per 1g (determined by the LAL method)
Purity	> 95%
Applications	Positive Control; Immunogen; SDS-PAGE; WB.

 Tel: 1-631-559-9269 1-516-512-3133

 Email: info@creative-biomart.com  Fax: 1-631-938-8127

 45-1 Ramsey Road, Shirley, NY 11967, USA

Stability The thermal stability is described by the loss rate. The loss rate was determined by accelerated thermal degradation test, that is, incubate the protein at 37 centigrade for 48h, and no obvious degradation and precipitation were observed. The loss rate is less than 5% within the expiration date under appropriate storage condition.

Storage Avoid repeated freeze/thaw cycles. Store at 2-8 centigrade for one month. Aliquot and store at -80 centigrade for 12 months.

Reconstitution Reconstitute in PBS or others.

GENE INFORMATION

Gene Name [CD247 CD247 molecule \[Homo sapiens \]](#)

Official Symbol [CD247](#)

Synonyms CD247; CD247 molecule; CD3H; CD3Q; CD3zeta chain; T3Z; CD3Z; TCRZ; CD3-ZETA;

Gene ID [919](#)

mRNA Refseq [NM_000734](#)

Protein Refseq [NP_000725](#)

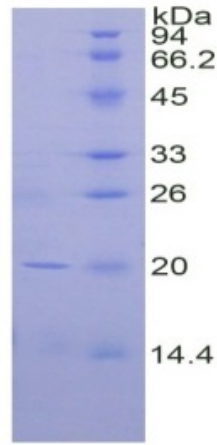
MIM [186780](#)

UniProt ID [P20963](#)

 Tel: 1-631-559-9269 1-516-512-3133

 Email: info@creative-biomart.com  Fax: 1-631-938-8127

 45-1 Ramsey Road, Shirley, NY 11967, USA



Tel: 1-631-559-9269 1-516-512-3133

Email: info@creative-biomart.com Fax: 1-631-938-8127

45-1 Ramsey Road, Shirley, NY 11967, USA