

## Recombinant Human CD248 Protein, GST-Tagged

Cat. No. CD248-0758H Lot. No. (See product label)

### SPECIFICATION

<b>Product Overview</b>	Human CD248 full-length ORF (AAI04485.1, 1 a.a. - 757 a.a.) recombinant protein with GST-tag at N-terminal.
<b>Species</b>	Human
<b>Source</b>	Wheat Germ
<b>ProteinLength</b>	1-757aa
<b>Description</b>	CD248 (CD248 Molecule) is a Protein Coding gene. GO annotations related to this gene include calcium ion binding and extracellular matrix binding. An important paralog of this gene is CD93.
<b>Molecular Mass</b>	107.3 kDa
<b>AA Sequence</b>	<pre> MLLRLLLAWAAAGPTLGQDPWAAEPRAACGPSSCYALFPRRRRTFLEAWRACRELG GDLATPRTPEEAQRVDSL VGAGPASRLWIGLQRQARQCQLQRPLRGFTWTTGDQ DTAFTNWAQPASGGPCPAQRVVALEASGEHRWLEGSCTLAVDGYLCQFGFEGAC PALQDEAGQAGPAVYTTPFHLVSTEFEWLPFGSVAAVQCQAGRGASLLCVKQPEG GVGWSRAGPLCLGTGCS PDNNGGCEHEC VEEVDGHVSCRCTEGFRLAADGRSCED PCAQAPCEQQCEPGGPQGYSCHCRLGFRPAEDDPHRCVDTDECQIAGVCQQMCV NYVGGFECYCSEGHELEADGISCSPAGAMGAQASQDLGDELDDGEDEEDEDEA WKAFNGGWTEMPGILWMEPTQPPDFALAYRPSFPEDREPQIPYPEPTWPPPLSAP RVPHYHSSVLSVTRPVVVSATRPTLPSAHQPPVIPATHPALSRDHQIPVIAANYPDLP AYQPGILSVSHSAQPPAHQPPMISTKYPELFP AHQSPMFPDTRVAGTQTTTHLPGIP </pre>

Tel: 1-631-559-9269 1-516-512-3133

Email: [info@creative-biomart.com](mailto:info@creative-biomart.com) Fax: 1-631-938-8127

45-1 Ramsey Road, Shirley, NY 11967, USA

PNHAPLVTTLGAQLPPQAPDALVLRTQATQLPIIPTAQPSLTTTTSRSPVSPAHQISVP  
 AATQPAALPTLLPSQSPTNQTSPISPHPHSKAPQIPREDGSPSKLALWLPSAPTAA  
 PTALGEAGLAEHSQRDDRWLLVALLVPTCVFLVLLALGIVYCTRCGPHAPNKRITD  
 CYRWVIHAGSKSPTEPMPPRGSLTGVQTCRTSV

<b>Applications</b>	Enzyme-linked Immunoabsorbent Assay Western Blot (Recombinant protein) Antibody Production Protein Array
<b>Storage</b>	Store at -80 centigrade. Aliquot to avoid repeated freezing and thawing.
<b>Storage Buffer</b>	50 mM Tris-HCl, 10 mM reduced Glutathione, pH=8.0 in the elution buffer.

## GENE INFORMATION

<b>Gene Name</b>	CD248 CD248 molecule, endosialin [ Homo sapiens ]
<b>Official Symbol</b>	CD248
<b>Synonyms</b>	CD248; CD248 molecule, endosialin; CD164 sialomucin like 1, CD164L1, CD248 antigen, endosialin; endosialin; TEM1; tumor endothelial marker 1; 2610111G01Rik; CD164 sialomucin-like 1; CD248 antigen, endosialin; CD164L1; MGC119478; MGC119479;
<b>Gene ID</b>	57124
<b>mRNA Refseq</b>	NM_020404
<b>Protein Refseq</b>	NP_065137

 Tel: 1-631-559-9269 1-516-512-3133

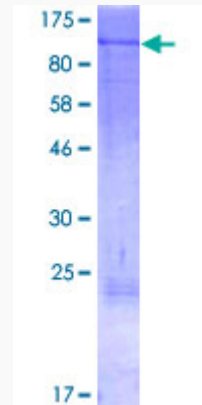
 Email: [info@creative-biomart.com](mailto:info@creative-biomart.com)  Fax: 1-631-938-8127

 45-1 Ramsey Road, Shirley, NY 11967, USA

MIM 606064

UniProt ID Q9HCU0

Quality Control  
Testing



12.5% SDS-PAGE Stained with Coomassie Blue.

Tel: 1-631-559-9269 1-516-512-3133

Email: [info@creative-biomart.com](mailto:info@creative-biomart.com) Fax: 1-631-938-8127

45-1 Ramsey Road, Shirley, NY 11967, USA