

Recombinant Human CD248 protein, His-tagged

Cat. No. CD248-5033H Lot. No. (See product label)

SPECIFICATION

Product Overview	Recombinant Human CD248 protein(Q9HCU0-1)(Gln18-Leu687), fused with C-terminal His tag, was expressed in HEK293.
Species	Human
Source	HEK293
ProteinLength	Gln18-Leu687
Tag	C-His
Form	Supplied as 0.22µm filtered solution in PBS (pH 7.4).
Bio-activity	Immobilized Human TEM1, His Tag at 1ug/ml (100ul/Well) on the plate. Dose response curve for Anti-TEM1 Antibody, hFc Tag with the EC50 of 2.0ng/ml determined by ELISA.
Molecular Mass	The protein has a predicted MW of 72.7 kDa. Due to glycosylation, the protein migrates to 115-140 kDa based on Tris-Bis PAGE result.
Endotoxin	Less than 1EU per µg by the LAL method.
Purity	> 95% as determined by Tris-Bis PAGE;> 95% as determined by HPLC
Storage	Valid for 12 months from date of receipt when stored at -80°C. Recommend to aliquot

 Tel: 1-631-559-9269 1-516-512-3133

 Email: info@creative-biomart.com  Fax: 1-631-938-8127

 45-1 Ramsey Road, Shirley, NY 11967, USA

the protein into smaller quantities for optimal storage. Please do not repeated freeze-thaw cycles.

Reconstitution

It is recommended that sterile water be added to the vial to prepare a stock solution of 0.2 ug/ul. Centrifuge the vial at 4°C before opening to recover the entire contents.

GENE INFORMATION

Gene Name [CD248 CD248 molecule, endosialin \[Homo sapiens \]](#)

Official Symbol [CD248](#)

Synonyms

CD248; CD248 molecule, endosialin; CD164 sialomucin like 1 , CD164L1, CD248 antigen, endosialin; endosialin; TEM1; tumor endothelial marker 1; 2610111G01Rik; CD164 sialomucin-like 1; CD248 antigen, endosialin; CD164L1; MGC119478; MGC119479;

Gene ID [57124](#)

mRNA Refseq [NM_020404](#)

Protein Refseq [NP_065137](#)

MIM [606064](#)

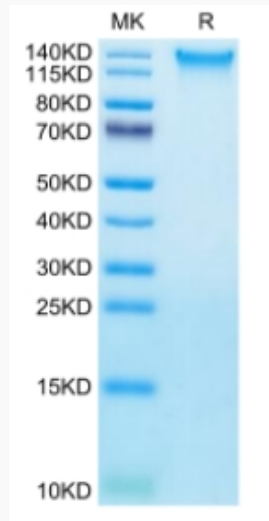
UniProt ID [Q9HCU0](#)

 Tel: 1-631-559-9269 1-516-512-3133

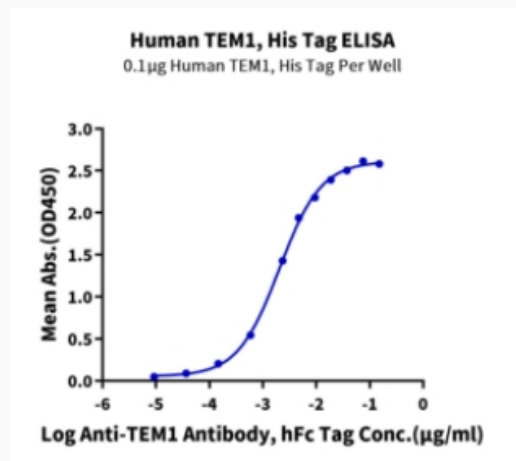
 Email: info@creative-biomart.com  Fax: 1-631-938-8127

 45-1 Ramsey Road, Shirley, NY 11967, USA

Tris-Bis PAGE



ELISA Data



 Tel: 1-631-559-9269 1-516-512-3133

 Email: info@creative-biomart.com  Fax: 1-631-938-8127

 45-1 Ramsey Road, Shirley, NY 11967, USA