

CD25 protein-coupled magnetic MicroBeads

Cat. No. CD25-693M **Lot. No.** (See product label)

SPECIFICATION

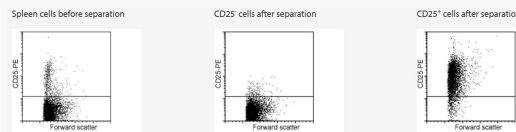
Species Mouse

Capacity for 1×10⁹ total cells

Background For separation, CD25+ cells are indirectly magnetically labeled with CD25-PE and Anti-PE MicroBeads. CD25 is the IL-2R α-chain, which combined with the β-chain (CD122) and the γ-chain (CD132) forms the functional IL-2R complex. Binding of CD25-PE does not inhibit the adhesion of IL-2 to its receptor. IL-2Rα is expressed on activated T and B cells, to a lower extent on activated dendritic cells, on regulatory T cells, in the early stage of thymic T cell development (CD4-CD8-), and transiently during B cell ontogeny. NK cells and naive T and B cells do not express IL2-Rα.

Application CD25+ cells isolated by using the CD25 MicroBead Kit are suitable for in vitro analysis, coculture experiments, or adoptive transfer.

Analysis



Isolation of CD25+ cells from a mouse spleen cell suspension using the CD25 MicroBead Kit, two MS Columns, and a MiniMACS Separator.

 Tel: 1-631-559-9269 1-516-512-3133

 Email: info@creative-biomart.com  Fax: 1-631-938-8127

 45-1 Ramsey Road, Shirley, NY 11967, USA