

Active Recombinant Human CD27 protein, hFc-tagged

Cat. No. CD27-180H Lot. No. (See product label)

SPECIFICATION

Product Overview	Active Recombinant Human CD27 protein(P26842)(Thr21-Ile192) is expressed from HEK293 with hFc (IgG1) tag at the C-Terminus.
Species	Human
Source	HEK293
ProteinLength	21-192 aa
Form	Lyophilized from 0.22µm filtered solution in PBS (pH 7.4).
Bio-activity	Immobilized Human CD27 Ligand Trimer, His Tag at 2µg/ml (100µl/Well) on the plate. Dose response curve for Human CD27, hFc Tag with the EC50 of 30.1ng/ml determined by ELISA.
Molecular Mass	The protein has a predicted MW of 46.2 kDa. Due to glycosylation, the protein migrates to 60-75 kDa based on Bis-Tris PAGE result.
Endotoxin	Less than 1 EU per µg by the LAL method.
Purity	> 95% as determined by Bis-Tris PAGE > 95% as determined by HPLC
Storage	-20 to -80°C for 12 months as supplied from date of receipt. -80°C for 3 months after reconstitution. Recommend to aliquot the protein into smaller quantities for optimal storage. Please minimize freeze-thaw cycles.

 Tel: 1-631-559-9269 1-516-512-3133

 Email: info@creative-biomart.com  Fax: 1-631-938-8127

 45-1 Ramsey Road, Shirley, NY 11967, USA

Reconstitution Dissolve the lyophilized protein in distilled water.

GENE INFORMATION

Gene Name CD27 CD27 molecule [Homo sapiens]

Official Symbol CD27

Synonyms CD27; CD27 molecule; TNFRSF7, tumor necrosis factor receptor superfamily, member 7; CD27 antigen; S152; Tp55; CD27L receptor; T cell activation antigen S152; T-cell activation antigen CD27; tumor necrosis factor receptor superfamily, member 7; T14; TNFRSF7; MGC20393;

Gene ID 939

mRNA Refseq NM_001242

Protein Refseq NP_001233

MIM 186711

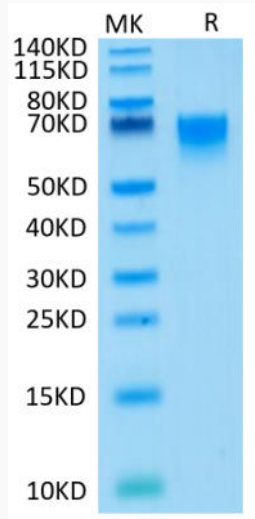
UniProt ID P26842

 Tel: 1-631-559-9269 1-516-512-3133

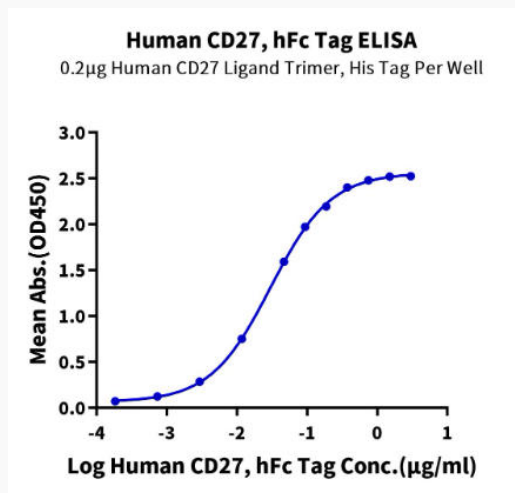
 Email: info@creative-biomart.com  Fax: 1-631-938-8127

 45-1 Ramsey Road, Shirley, NY 11967, USA

Bis-Tris PAGE



ELISA Data



Tel: 1-631-559-9269 1-516-512-3133

Email: info@creative-biomart.com Fax: 1-631-938-8127

45-1 Ramsey Road, Shirley, NY 11967, USA