

Recombinant Cynomolgus/Rhesus macaque CD274 protein, His-tagged

Cat. No. CD274-168C **Lot. No.** (See product label)

SPECIFICATION

Product Overview	Recombinant Cynomolgus/Rhesus macaque CD274 Protein (19-238aa), was expressed in human 293 cells (HEK293) with C-terminal His tag.
Species	Cynomolgus/Rhesus macaque
Source	HEK293
ProteinLength	19-238 aa
Description	Programmed cell death 1 ligand 1 (PDL1) is also known as B7-H, B7H1, MGC142294, MGC142296, PD-L1, PDCD1L1 and PDCD1LG1, which is a member of the growing B7 family of immune molecules and is involved in the regulation of cellular and humoral immune responses. PDL1 is a cell surface immunoglobulin superfamily with two Ig-like domains within the extracellular region and a short cytoplasmic domain. This protein is broadly expressed in the majority of peripheral tissues as well as hematopoietic cells. Interaction between PDL1 and its receptors belonging to the CD28 family of molecules provide both stimulatory and inhibitory signals in regulating T cell activation and tolerance. PDL1 may inhibit ongoing T-cell responses by inducing apoptosis and arresting cell-cycle progression.
Predicted N Terminal	Phe19
Form	Lyophilized from 0.22 µm filtered solution in PBS, pH7.4, 10% trehalose.

 Tel: 1-631-559-9269 1-516-512-3133

 Email: info@creative-biomart.com  Fax: 1-631-938-8127

 45-1 Ramsey Road, Shirley, NY 11967, USA

Molecular Mass	The protein has a calculated MW of 27.1 kDa. The protein migrates as 37-42 kDa under reducing (R) condition (SDS-PAGE) due to glycosylation.
Endotoxin	Less than 1.0 EU per µg by the LAL method.
Purity	>95% as determined by SDS-PAGE.
Storage	<p>For long term storage, the product should be stored at lyophilized state at -20 centigrade or lower.</p> <p>Please avoid repeated freeze-thaw cycles.</p> <p>This product is stable after storage at:</p> <p>-20 to -70 centigrade for 12 months in lyophilized state;</p> <p>-70 centigrade for 3 months under sterile conditions after reconstitution.</p>
Reconstitution	It is recommended that sterile water be added to the vial to prepare a stock solution of 0.2 ug/ul. Centrifuge the vial at 4°C before opening to recover the entire contents.

GENE INFORMATION

Gene Name	CD274
Official Symbol	CD274
Synonyms	CD274; CD274 molecule; CD274 antigen , PDCD1LG1, programmed cell death 1 ligand 1; programmed cell death 1 ligand 1; B7 homolog 1; B7 H; B7 H1; B7H1; PD L1; PDL1; CD274 antigen; PDCD1 ligand 1; programmed death ligand 1; B7-H; PD-L1; PDCD1L1; PDCD1LG1; MGC142294; MGC142296
Gene ID	102145573
mRNA Refseq	XM_005581779.2

 Tel: 1-631-559-9269 1-516-512-3133

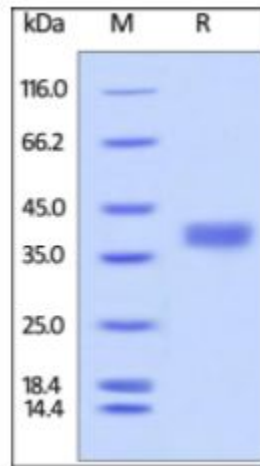
 Email: info@creative-biomart.com  Fax: 1-631-938-8127

 45-1 Ramsey Road, Shirley, NY 11967, USA

Protein Refseq XP_005581836.1

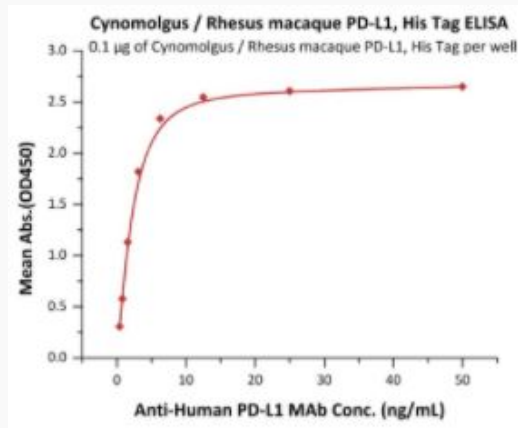
UniProt ID G7PSE7

SDS-PAGE of CD274-168C



Cynomolgus / Rhesus macaque PD-L1, His Tag on SDS-PAGE under reducing (R) condition. The gel was stained overnight with Coomassie Blue. The purity of the protein is greater than 95%.

Bioactivity-ELISA of CD274-168C



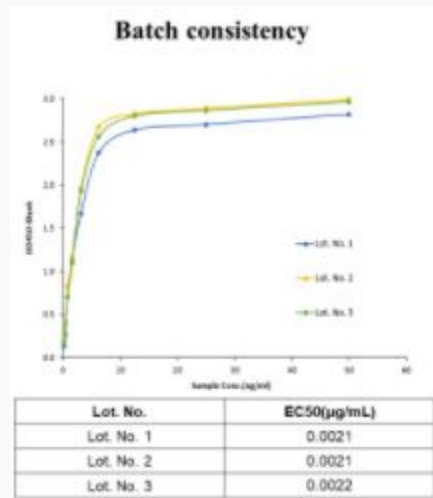
Tel: 1-631-559-9269 1-516-512-3133

Email: info@creative-biomart.com Fax: 1-631-938-8127

45-1 Ramsey Road, Shirley, NY 11967, USA

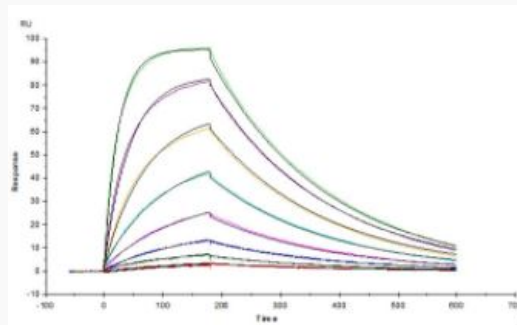
Immobilized Cynomolgus / Rhesus macaque PD-L1, His Tag at 1 $\mu\text{g/mL}$ (100 $\mu\text{L/well}$) can bind Anti-Human PD-L1 MAb with a linear range of 0.4-3 ng/mL (QC tested).

Bioactivity-ELISA



Batch consistency of Bioactivity-ELISA

Bioactivity-SPR of CD274-168C



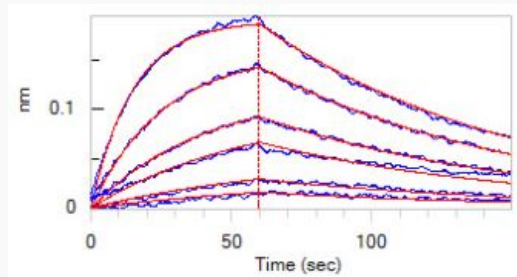
Anti-Human PD-L1 MAb captured on CM5 chip via anti-human IgG Fc antibody surface, can bind Cynomolgus Rhesus / macaque PD-L1, His Tag with an affinity

Tel: 1-631-559-9269 1-516-512-3133

Email: info@creative-biomart.com Fax: 1-631-938-8127

45-1 Ramsey Road, Shirley, NY 11967, USA

constant of 23.3 nM as determined in a SPR assay (Biacore T200) (Routinely tested).




**Bioactivity-BLI of
CD274-168C**

Loaded Anti-Human PD-L1 MAb (Human IgG1) on AHC Biosensor, can bind Cynomolgus Rhesus / macaque PD-L1, His Tag with an affinity constant of 19.1 nM as determined in BLI assay (ForteBio Octet Red96e) (Routinely tested).

 Tel: 1-631-559-9269 1-516-512-3133

 Email: info@creative-biomart.com  Fax: 1-631-938-8127

 45-1 Ramsey Road, Shirley, NY 11967, USA