

Recombinant Cynomolgus CD274 protein, His-tagged

Cat. No. CD274-1945C Lot. No. (See product label)

SPECIFICATION

| | |
|-------------------------|---|
| Product Overview | Recombinant Cynomolgus CD274 Protein (G7PSE7, 19-238aa), was expressed in HEK293 with C-terminal His tag. |
| Species | Cynomolgus |
| Source | HEK293 |
| ProteinLength | 19-238 aa |
| Tag | C-His |
| Form | Lyophilized from 0.22µm filtered solution in PBS (pH 7.4). Normally 5% trehalose is added as protectant before lyophilization. |
| Bio-activity | Immobilized Cynomolgus/Rhesus macaque PD-L1, His Tag at 1µg/ml (100µl/Well) on the plate. Dose response curve for Anti-PD-L1 Antibody, hFc Tag with the EC50 of 1.9ng/ml determined by ELISA. |
| Molecular Mass | The protein has a predicted MW of 26 kDa. Due to glycosylation, the protein migrates to 35-45 kDa based on Tris-Bis PAGE result. |
| Endotoxin | Less than 1EU per µg by the LAL method. |
| Purity | > 95% as determined by Tris-Bis PAGE; > 95% as determined by HPLC |

 Tel: 1-631-559-9269 1-516-512-3133

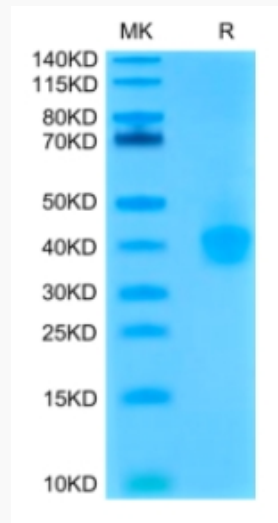
 Email: info@creative-biomart.com  Fax: 1-631-938-8127

 45-1 Ramsey Road, Shirley, NY 11967, USA

Storage Reconstituted protein stable at -80°C for 12 months, 4°C for 1 week. Use a manual defrost freezer and avoid repeated freeze-thaw cycles.

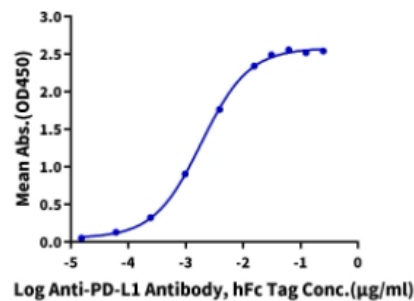
Reconstitution Centrifuge tubes before opening. Reconstituting to a concentration more than 100 µg/ml is recommended. Dissolve the lyophilized protein in distilled water.

Tris-Bis PAGE



ELISA Data

Cynomolgus/Rhesus macaque PD-L1, His Tag ELISA
0.1 µg Cynomolgus/Rhesus macaque PD-L1, His Tag Per Well



Tel: 1-631-559-9269 1-516-512-3133

Email: info@creative-biomart.com Fax: 1-631-938-8127

45-1 Ramsey Road, Shirley, NY 11967, USA