

Active Recombinant Human CD274 protein, hFc-tagged

Cat. No. CD274-2330H Lot. No. (See product label)

SPECIFICATION

Product Overview	Active Recombinant Human CD274 protein(Met 1-Thr 239)(NP_054862.1) was expressed in Human Cells with C-terminal fused Fc region of human IgG1.
Species	Human
Source	Human Cells
ProteinLength	1-239 aa
Form	Lyophilized from sterile PBS, pH 7.4.
Bio-activity	Measured by its binding ability in a functional ELISA. Immobilized human PD-1 at 10 µg/ml (100 µl/well) can bind recombinant human B7-H1 / PD-L1 / Fc chimera with a linear range of 0.02-0.4 µg/ml.
Molecular Mass	Measured by its binding ability in a functional ELISA. Immobilized human PD-1 at 10 µg/ml (100 µl/well) can bind recombinant human B7-H1 / PD-L1 / Fc chimera with a linear range of 0.02-0.4 µg/ml.
Endotoxin	< 1.0 EU per µg of the protein as determined by the LAL method.
Purity	> 95 % as determined by SDS-PAGE
Storage	Store it under sterile conditions at -20°C to -80°C upon receiving. Recommend to aliquot the protein into smaller quantities for optimal storage. Avoid repeated freeze-

 Tel: 1-631-559-9269 1-516-512-3133

 Email: info@creative-biomart.com  Fax: 1-631-938-8127

 45-1 Ramsey Road, Shirley, NY 11967, USA

thaw cycles.

Reconstitution

It is recommended that sterile water be added to the vial to prepare a stock solution of 0.2 ug/ul. Centrifuge the vial at 4°C before opening to recover the entire contents.

GENE INFORMATION

Gene Name [CD274 CD274 molecule \[Homo sapiens \]](#)

Official Symbol [CD274](#)

Synonyms

CD274; CD274 molecule; CD274 antigen, PDCD1LG1, programmed cell death 1 ligand 1; programmed cell death 1 ligand 1; B7 homolog 1; B7 H; B7 H1; B7H1; PD L1; PDL1; CD274 antigen; PDCD1 ligand 1; programmed death ligand 1; B7-H; PD-L1; PDCD1L1; PDCD1LG1; MGC142294; MGC142296;

Gene ID [29126](#)

mRNA Refseq [NM_014143](#)

Protein Refseq [NP_054862](#)

MIM [605402](#)

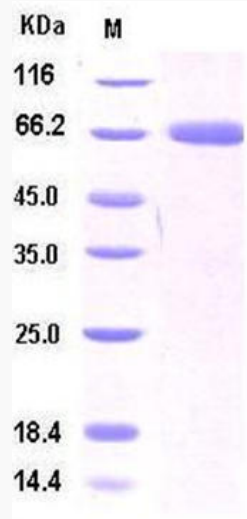
UniProt ID [Q9NZQ7](#)

 Tel: 1-631-559-9269 1-516-512-3133

 Email: info@creative-biomart.com  Fax: 1-631-938-8127

 45-1 Ramsey Road, Shirley, NY 11967, USA

SDS-PAGE



 Tel: 1-631-559-9269 1-516-512-3133

 Email: info@creative-biomart.com  Fax: 1-631-938-8127

 45-1 Ramsey Road, Shirley, NY 11967, USA