

# Active Recombinant Human CD274 protein, hFc and His-tagged

Cat. No. CD274-2696H Lot. No. (See product label)

## SPECIFICATION

<b>Product Overview</b>	Recombinant Human B7-H1 (PD-L1/CD274) Protein (NP_054862.1, 19-239aa), was expressed in HEK293 cells with C-terminal Fc tag and 6xHis tag.
<b>Species</b>	Human
<b>Source</b>	HEK293
<b>ProteinLength</b>	19-239 aa
<b>Form</b>	Lyophilized from a 0.22 µm filtered solution of PBS, pH 7.4.
<b>Bio-activity</b>	Measured by its binding ability in a functional ELISA. Immobilized Recombinant Human PD-1 at 5 µg/mL (100 µL/well) can bind Recombinant Human PD-L1 with a linear range of 0.5-2.2 µg/mL.
<b>Molecular Mass</b>	70-75 kDa
<b>Endotoxin</b>	< 0.1 EU/µg of the protein by LAL method.
<b>Purity</b>	> 95% by SDS-PAGE.
<b>Storage</b>	Store the lyophilized protein at -20°C to -80 °C for long term. After reconstitution, the protein solution is stable at -20 °C for 3 months, at 2-8 °C for up to 1 week.

 Tel: 1-631-559-9269 1-516-512-3133

 Email: [info@creative-biomart.com](mailto:info@creative-biomart.com)  Fax: 1-631-938-8127

 45-1 Ramsey Road, Shirley, NY 11967, USA

**Reconstitution** Reconstitute to a concentration of 0.1-0.5 mg/mL in sterile distilled water.

## GENE INFORMATION

**Gene Name** CD274 CD274 molecule [ Homo sapiens ]

**Official Symbol** CD274

**Synonyms** CD274; CD274 molecule; CD274 antigen , PDCD1LG1, programmed cell death 1 ligand 1; programmed cell death 1 ligand 1; B7 homolog 1; B7 H; B7 H1; B7H1; PD L1; PDL1; CD274 antigen; PDCD1 ligand 1; programmed death ligand 1; B7-H; PD-L1; PDCD1L1; PDCD1LG1; MGC142294; MGC142296;

**Gene ID** 29126

**mRNA Refseq** NM\_014143

**Protein Refseq** NP\_054862

**MIM** 605402

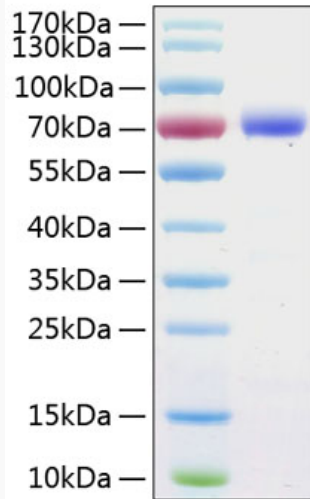
**UniProt ID** Q9NZQ7

 Tel: 1-631-559-9269 1-516-512-3133

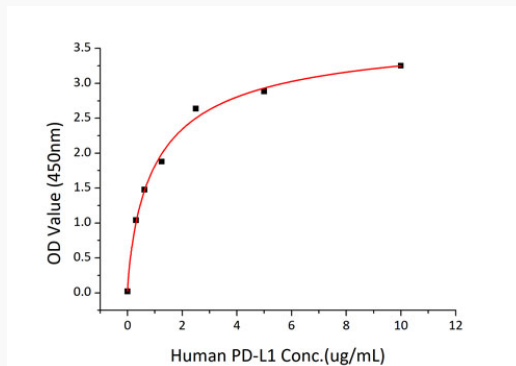
 Email: [info@creative-biomart.com](mailto:info@creative-biomart.com)  Fax: 1-631-938-8127

 45-1 Ramsey Road, Shirley, NY 11967, USA

**SDS-PAGE**



**Bio-activity**



 Tel: 1-631-559-9269 1-516-512-3133

 Email: [info@creative-biomart.com](mailto:info@creative-biomart.com)  Fax: 1-631-938-8127

 45-1 Ramsey Road, Shirley, NY 11967, USA