

# Active Recombinant Human CD274 Homodimer Protein, His and Avi tagged

**Cat. No.** CD274-52H    **Lot. No.** (See product label)

## SPECIFICATION

<b>Product Overview</b>	Recombinant Human PD-L1 Protein dimer (Q9NZQ7), was expressed in HEK293T with C-terminal proprietary cis-dimer motif and tandem His-Avi tag (contains PD-L1 extracellular domain).
<b>Species</b>	Human
<b>Source</b>	HEK293T
<b>ProteinLength</b>	19-238 aa
<b>Description</b>	Human programmed death-ligand 1 (PD-L1), is a Type I transmembrane protein in the immunoglobulin superfamily and a member of the B7 Family of ligands. PD-L1 is also known as cluster of differentiation 274 (CD274), B7 homolog 1 (B7H1, B7-H1), PDCD1L1, PDCD1LG1, and CD274 molecule. PD-L1 contains an extracellular domain with a distal immunoglobulin V-like (Ig-V-like) domain and proximal immunoglobulin C-like (Ig-C-like) domain, a transmembrane domain, and a cytoplasmic domain. PD-L1 is expressed on T cells, NK cells, macrophages, myeloid DCs, B cells, epithelial cells, and vascular endothelial cells. PD-L1 serves as an immunosuppressive ligand for PD-1 and the overexpression of PD-L1 on many tumor cells can prevent the immune system from attacking tumors. Inhibition of the interaction between PD-1 and PD-L1 can enhance antitumor activity, which has led to a new class of drugs called PD-1 inhibitors to activate the immune system and treat certain types of cancer. PD-L1 is highly expressed in a variety of malignancies,

 Tel: 1-631-559-9269    1-516-512-3133

 Email: [info@creative-biomart.com](mailto:info@creative-biomart.com)     Fax: 1-631-938-8127

 45-1 Ramsey Road, Shirley, NY 11967, USA

particularly lung cancer. PD-L1 exists as both a monomer and a dimer. Therefore, a recombinant protein mimicking the PD-L1 protein dimer conformation can be crucial for cancer therapeutic discovery.

<b>Molecular Mass</b>	70 kDa
<b>Purity</b>	Greater than 90% dimer form as determined by SDS-PAGE under non-reducing condition
<b>Application</b>	Verified Applications: ELISA and BLI for PD-L1-specific antibody and BLI for PD-1 ligand protein binding assays. Suggested Applications: SPR for PD-L1-specific antibody and PD-1 protein binding assays. Animal immunization, RUO.
<b>Storage</b>	Store at -80 centigrade.
<b>Storage Buffer</b>	0.22µm filtered PBS, pH 7.4
<b>Shipping</b>	Frozen Dry Ice

## GENE INFORMATION

<b>Gene Name</b>	CD274 CD274 molecule [ Homo sapiens (human) ]
<b>Official Symbol</b>	CD274
<b>Synonyms</b>	CD274; CD274 molecule; CD274 antigen, PDCD1LG1, programmed cell death 1 ligand 1; programmed cell death 1 ligand 1; B7 homolog 1; B7 H; B7 H1; B7H1; PD L1; PDL1; CD274 antigen; PDCD1 ligand 1; programmed death ligand 1; B7-H; PD-L1; PDCD1L1; PDCD1LG1; MGC142294; MGC142296;
<b>Gene ID</b>	29126

 Tel: 1-631-559-9269 1-516-512-3133

 Email: [info@creative-biomart.com](mailto:info@creative-biomart.com)  Fax: 1-631-938-8127

 45-1 Ramsey Road, Shirley, NY 11967, USA

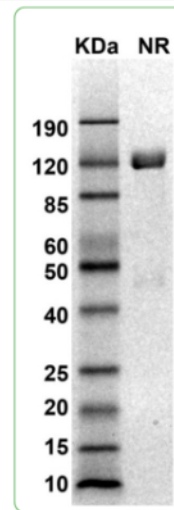
mRNA Refseq [NM\\_014143](#)

Protein Refseq [NP\\_054862](#)

MIM [605402](#)

UniProt ID [Q9NZQ7](#)

#### SDS-PAGE and WB



MW: Molecular Weight marker reduced condition NR: PD-L1 dimer under non-reduced condition

 Tel: 1-631-559-9269 1-516-512-3133

 Email: [info@creative-biomart.com](mailto:info@creative-biomart.com)  Fax: 1-631-938-8127

 45-1 Ramsey Road, Shirley, NY 11967, USA