

Recombinant Human CD274 protein, hFc-tagged

Cat. No. CD274-952H **Lot. No.** (See product label)

SPECIFICATION

Product Overview	Recombinant Human CD274 Protein (Q9NZQ7-1, 19-238aa), was expressed in HEK293 with C-terminal hFc tag.
Species	Human
Source	HEK293
ProteinLength	19-238 aa
Tag	C-hFc
Form	Lyophilized from 0.22µm filtered solution in PBS (pH 7.4). Normally 8% trehalose is added as protectant before lyophilization.
Bio-activity	Immobilized Human PD-1, mFc Tag at 1 ug/ml (100 ul/well) on the plate. Dose response curve for Human PD-L1, hFc Tag with the EC50 of 0.17 ug/ml determined by ELISA (QC Test).
Molecular Mass	The protein has a predicted MW of 52 kDa. Due to glycosylation, the protein migrates to 68-80 kDa based on Tris-Bis PAGE result.
Endotoxin	Less than 1EU per µg by the LAL method.
Purity	> 95% as determined by Tris-Bis PAGE;> 95% as determined by HPLC

 Tel: 1-631-559-9269 1-516-512-3133

 Email: info@creative-biomart.com  Fax: 1-631-938-8127

 45-1 Ramsey Road, Shirley, NY 11967, USA

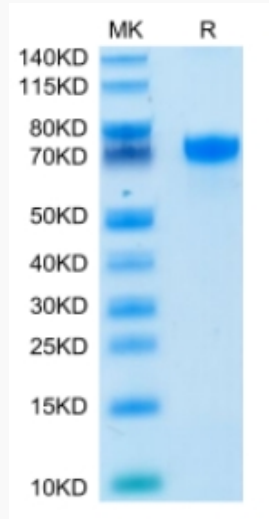
Storage	Reconstituted protein stable at -80°C for 12 months, 4°C for 1 week. Use a manual defrost freezer and avoid repeated freeze-thaw cycles.
Reconstitution	Centrifuge tubes before opening. Reconstituting to a concentration more than 100 µg/ml is recommended. Dissolve the lyophilized protein in distilled water.
GENE INFORMATION	
Gene Name	CD274 CD274 molecule [Homo sapiens]
Official Symbol	CD274
Synonyms	CD274; CD274 molecule; CD274 antigen , PDCD1LG1, programmed cell death 1 ligand 1; programmed cell death 1 ligand 1; B7 homolog 1; B7 H; B7 H1; B7H1; PD L1; PDL1; CD274 antigen; PDCD1 ligand 1; programmed death ligand 1; B7-H; PD-L1; PDCD1L1; PDCD1LG1; MGC142294; MGC142296;
Gene ID	29126
mRNA Refseq	NM_014143
Protein Refseq	NP_054862
MIM	605402
UniProt ID	Q9NZQ7

 Tel: 1-631-559-9269 1-516-512-3133

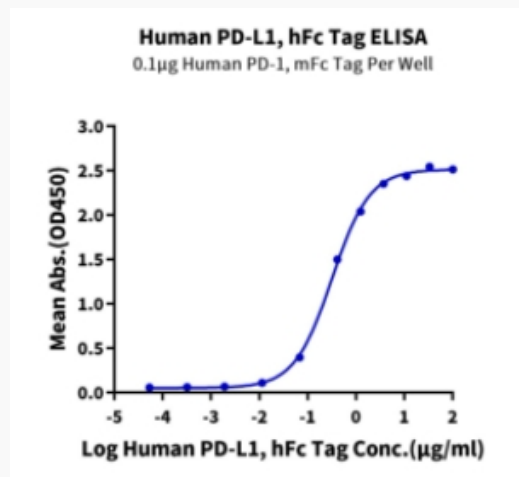
 Email: info@creative-biomart.com  Fax: 1-631-938-8127

 45-1 Ramsey Road, Shirley, NY 11967, USA

Tris-Bis PAGE



ELISA Data



 Tel: 1-631-559-9269 1-516-512-3133

 Email: info@creative-biomart.com  Fax: 1-631-938-8127

 45-1 Ramsey Road, Shirley, NY 11967, USA