

Recombinant Human CD276 protein, His-Avi-tagged, Biotinylated

Cat. No. CD276-126HB Lot. No. (See product label)

SPECIFICATION

Product Overview	Biotinylated Recombinant Human CD276 protein(Q5ZPR3-1)(Gly27-Thr461), fused with C-terminal His and Avi tag, was expressed in HEK293.
Species	Human
Source	HEK293
ProteinLength	Gly27-Thr461
Tag	C-His-Avi
Conjugation/Label	Biotin
Form	Lyophilized from 0.22µm filtered solution in PBS (pH 7.4). Normally 5% trehalose is added as protectant before lyophilization.
Bio-activity	Immobilized Anti-B7-H3 Antibody, hFc Tag at 2ug/ml (100ul/well) on the plate. Dose response curve for Biotinylated Human B7-H3 (4Ig) , His Tag with the EC50 of 8.8ng/ml determined by ELISA.
Molecular Mass	The protein has a predicted MW of 49.5 kDa. Due to glycosylation, the protein migrates to 70-80 kDa based on Tris-Bis PAGE result.
Endotoxin	Less than 1EU per µg by the LAL method.

 Tel: 1-631-559-9269 1-516-512-3133

 Email: info@creative-biomart.com  Fax: 1-631-938-8127

 45-1 Ramsey Road, Shirley, NY 11967, USA

Purity	> 95% as determined by Tris-Bis PAGE;> 95% as determined by HPLC
Storage	Reconstituted protein stable at -80°C for 12 months, 4°C for 1 week. Use a manual defrost freezer and avoid repeated freeze-thaw cycles.
Reconstitution	Centrifuge tubes before opening. Reconstituting to a concentration more than 100 µg/ml is recommended. Dissolve the lyophilized protein in distilled water.
Conjugation	Biotin

GENE INFORMATION

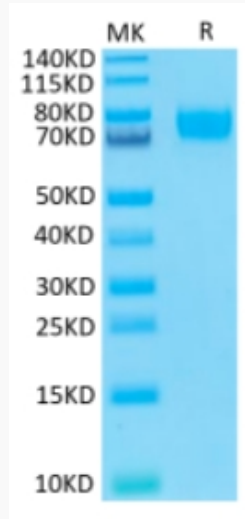
Gene Name	CD276 CD276 molecule [Homo sapiens]
Official Symbol	CD276
Synonyms	CD276; CD276 molecule; CD276 antigen; B7 H3; B7H3; B7RP 2; B7 homolog 3; costimulatory molecule; B7-H3; B7RP-2; 4lg-B7-H3;
Gene ID	80381
mRNA Refseq	NM_001024736
Protein Refseq	NP_001019907
MIM	605715
UniProt ID	Q5ZPR3

 Tel: 1-631-559-9269 1-516-512-3133

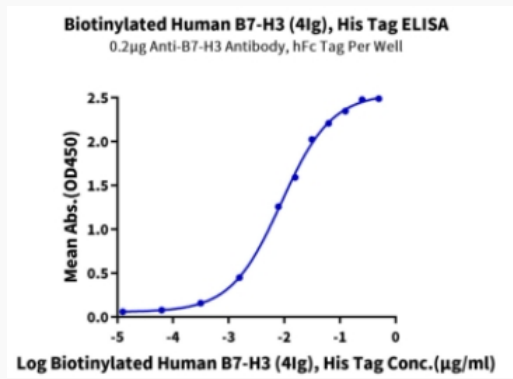
 Email: info@creative-biomart.com  Fax: 1-631-938-8127

 45-1 Ramsey Road, Shirley, NY 11967, USA

Tris-Bis PAGE



ELISA Data



 Tel: 1-631-559-9269 1-516-512-3133

 Email: info@creative-biomart.com  Fax: 1-631-938-8127

 45-1 Ramsey Road, Shirley, NY 11967, USA