

## Recombinant Human CD276 protein, His-Avi-tagged

**Cat. No.** CD276-127H    **Lot. No.** (See product label)

### SPECIFICATION

<b>Product Overview</b>	Recombinant Human CD276 protein(Q5ZPR3-1)(Gly27-Thr461), fused with C-terminal His and Avi tag, was expressed in HEK293.
<b>Species</b>	Human
<b>Source</b>	HEK293
<b>ProteinLength</b>	Gly27-Thr461
<b>Tag</b>	C-His-Avi
<b>Form</b>	Lyophilized from 0.22µm filtered solution in PBS (pH 7.4). Normally 5% trehalose is added as protectant before lyophilization.
<b>Bio-activity</b>	Immobilized Human B7-H3 (4lg), His Tag at 0.5ug/ml (100ul/Well) on the plate. Dose response curve for Anti-B7-H3 Antibody, hFc Tag with the EC50 of 4.9ng/ml determined by ELISA.
<b>Molecular Mass</b>	The protein has a predicted MW of 49.5 kDa. Due to glycosylation, the protein migrates to 70-80 kDa based on Tris-Bis PAGE result.
<b>Endotoxin</b>	Less than 1EU per µg by the LAL method.
<b>Purity</b>	> 95% as determined by Tris-Bis PAGE;> 95% as determined by HPLC

 Tel: 1-631-559-9269    1-516-512-3133

 Email: [info@creative-biomart.com](mailto:info@creative-biomart.com)     Fax: 1-631-938-8127

 45-1 Ramsey Road, Shirley, NY 11967, USA

**Storage** Reconstituted protein stable at -80°C for 12 months, 4°C for 1 week. Use a manual defrost freezer and avoid repeated freeze-thaw cycles.

**Reconstitution** Centrifuge tubes before opening. Reconstituting to a concentration more than 100 µg/ml is recommended. Dissolve the lyophilized protein in distilled water.

## GENE INFORMATION

**Gene Name** CD276 CD276 molecule [ Homo sapiens ]

**Official Symbol** CD276

**Synonyms** CD276; CD276 molecule; CD276 antigen; B7 H3; B7H3; B7RP 2; B7 homolog 3; costimulatory molecule; B7-H3; B7RP-2; 4lg-B7-H3;

**Gene ID** 80381

**mRNA Refseq** NM\_001024736

**Protein Refseq** NP\_001019907

**MIM** 605715

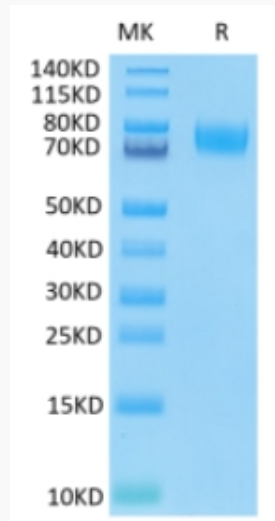
**UniProt ID** Q5ZPR3

 Tel: 1-631-559-9269 1-516-512-3133

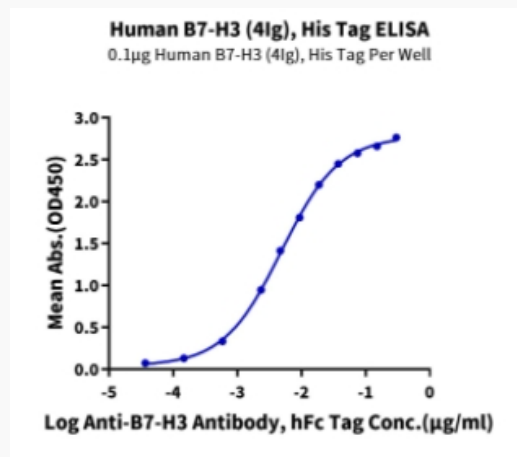
 Email: [info@creative-biomart.com](mailto:info@creative-biomart.com)  Fax: 1-631-938-8127

 45-1 Ramsey Road, Shirley, NY 11967, USA

**Tris-Bis PAGE**



**ELISA Data**



Tel: 1-631-559-9269 1-516-512-3133

Email: [info@creative-biomart.com](mailto:info@creative-biomart.com) Fax: 1-631-938-8127

45-1 Ramsey Road, Shirley, NY 11967, USA