

Active Recombinant Human CD276 protein, Fc-tagged

Cat. No. CD276-303H **Lot. No.** (See product label)

SPECIFICATION

| | |
|-------------------------|--|
| Product Overview | Active Recombinant Human CD276 protein(Q5ZPR3-1)(Gly27-Thr461) is expressed from HEK293 with hFc (IgG1) tag at the C-Terminus. |
| Species | Human |
| Source | HEK293 |
| ProteinLength | 27-461 aa |
| Form | Lyophilized from 0.22µm filtered solution in PBS (pH 7.4). |
| Bio-activity | Immobilized Human B7-H3 (4Ig), hFc Tag at 5µg/ml (100µl/Well) on the plate. Dose response curve for Biotinylated Anti-B7-H3 Antibody, hFc Tag with the EC50 of 52.3ng/ml determined by ELISA. |
| Molecular Mass | The protein has a predicted MW of 73.4 kDa. Due to glycosylation, the protein migrates to 95-125 kDa based on Bis-Tris PAGE result. |
| Endotoxin | Less than 0.01 EU per µg by the LAL method. |
| Purity | > 95% as determined by Bis-Tris PAGE > 95% as determined by HPLC |
| Storage | Store at -20 to -80°C for 12 months as supplied from date of receipt. -80°C for 3 months after reconstitution. Recommend to aliquot the protein into smaller quantities for optimal storage. Please minimize freeze-thaw cycles. |

 Tel: 1-631-559-9269 1-516-512-3133

 Email: info@creative-biomart.com  Fax: 1-631-938-8127

 45-1 Ramsey Road, Shirley, NY 11967, USA

| | |
|-------------------------------|---|
| Reconstitution | Dissolve the lyophilized protein in distilled water. |
| protein Refseq-Weblink | http://www.ncbi.nlm.nih.gov/protein/NP_001019907.1 |
| Unit ID | Q5ZPR3 |
| Unit ID-Weblink | https://www.uniprot.org/uniprotkb/Q5ZPR3 |

GENE INFORMATION

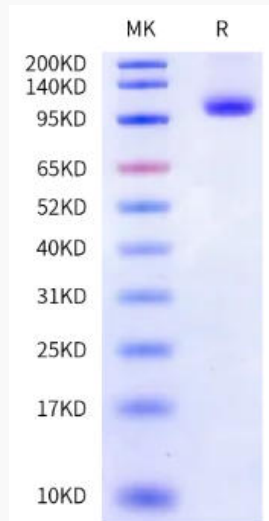
| | |
|------------------------|--|
| Gene Name | CD276 CD276 molecule [Homo sapiens] |
| Official Symbol | CD276 |
| Synonyms | CD276; CD276 molecule; CD276 antigen; B7 H3; B7H3; B7RP 2; B7 homolog 3; costimulatory molecule; B7-H3; B7RP-2; 4lg-B7-H3; |
| Gene ID | 80381 |
| mRNA Refseq | NM_001024736 |
| protein Refseq | NP_001019907 |
| MIM | 605715 |

 Tel: 1-631-559-9269 1-516-512-3133

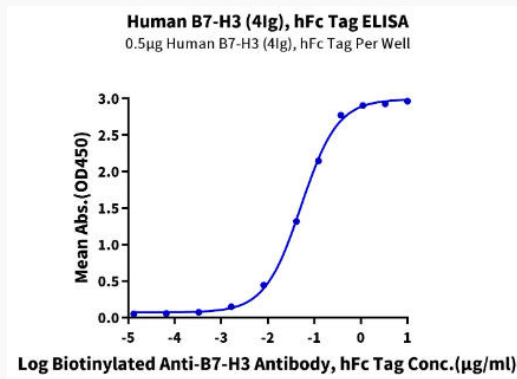
 Email: info@creative-biomart.com  Fax: 1-631-938-8127

 45-1 Ramsey Road, Shirley, NY 11967, USA

Bis-Tris PAGE



ELISA Data



 Tel: 1-631-559-9269 1-516-512-3133

 Email: info@creative-biomart.com  Fax: 1-631-938-8127

 45-1 Ramsey Road, Shirley, NY 11967, USA