

Recombinant Human CD28 Protein, GST-Tagged

Cat. No. CD28-0774H **Lot. No.** (See product label)

SPECIFICATION

Product Overview	Human CD28 full-length ORF (AAH93698.1, 1 a.a. - 220 a.a.) recombinant protein with GST-tag at N-terminal.
Species	Human
Source	Wheat Germ
Description	The protein encoded by this gene is essential for T-cell proliferation and survival, cytokine production, and T-helper type-2 development. Several alternatively spliced transcript variants encoding different isoforms have been found for this gene.[provided by RefSeq, Jul 2011]
Molecular Mass	51.5 kDa
AA Sequence	MLRLLLALNLFPSIQVTGNKILVKQSPMLVAYDNAVNLCKYSYNLFSREFRASHLHKG LDSAVEVCVVYGNYSQQLQVYSKTGFNCDGKLGNESVTFYLNLYVNQTDIYFCKIE VMYPPPYLDNEKSNGTIIHVKGKHLCPSPFPGPSKPFWVLVVGGVLACYSLLVTV AFIIFWVRSKRSRLLHSDYMNMTPRRPGPTRKHYPYAPPRDFAAYRS
Applications	Enzyme-linked Immunoabsorbent Assay Western Blot (Recombinant protein) Antibody Production Protein Array
Storage	Store at -80 centigrade. Aliquot to avoid repeated freezing and thawing.

 Tel: 1-631-559-9269 1-516-512-3133

 Email: info@creative-biomart.com  Fax: 1-631-938-8127

 45-1 Ramsey Road, Shirley, NY 11967, USA

Storage Buffer 50 mM Tris-HCl, 10 mM reduced Glutathione, pH=8.0 in the elution buffer.

GENE INFORMATION

Gene Name CD28 CD28 molecule [Homo sapiens]

Official Symbol CD28

Synonyms CD28; CD28 molecule; CD28 antigen (Tp44); T-cell-specific surface glycoprotein
CD28; T cell specific surface glycoprotein; CD28 antigen; Tp44; MGC138290;

Gene ID 940

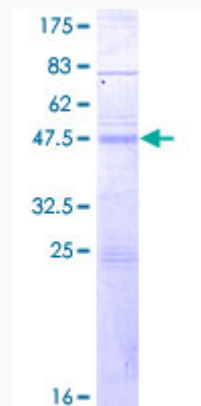
mRNA Refseq NM_001243077

Protein Refseq NP_001230006

MIM 186760

UniProt ID P10747

Quality Control Testing



 Tel: 1-631-559-9269 1-516-512-3133

 Email: info@creative-biomart.com  Fax: 1-631-938-8127

 45-1 Ramsey Road, Shirley, NY 11967, USA



12.5% SDS-PAGE Stained with Coomassie Blue.

 Tel: 1-631-559-9269 1-516-512-3133

 Email: info@creative-biomart.com  Fax: 1-631-938-8127

 45-1 Ramsey Road, Shirley, NY 11967, USA