

## Recombinant Human/Cynomolgus/Rhesus Macaque CD28 Protein, Asn19-Pro152, N-His-Avi tagged, Biotinylated

Cat. No. CD28-256H Lot. No. (See product label)

### SPECIFICATION

|                          |   |
|--------------------------|---|
| <b>Product Overview</b>  | Recombinant human/Cynomolgus/Rhesus macaque CD28-N-His-Avi protein was developed from HEK293 and has a target region of N-His-Avi.  |
| <b>Species</b>           | Human/Cynomolgus/Rhesus Macaque   |
| <b>Source</b>            | HEK293  |
| <b>ProteinLength</b>     | Asn19-Pro152  |
| <b>Description</b>       | The protein encoded by this gene is essential for T-cell proliferation and survival, cytokine production, and T-helper type-2 development. Several alternatively spliced transcript variants encoding different isoforms have been found for this gene. |
| <b>Conjugation/Label</b> | Biotin  |
| <b>Form</b>              | Lyophilised   |
| <b>Endotoxin</b>         | Endotoxin level was found to be less than 0.1 ng/μg (1 EU/μg).  |
| <b>Notes</b>             | FOR RESEARCH USE ONLY (RUO).  |
| <b>Storage</b>           | The lyophilized protein is stable for at least 1 year from date of receipt at -20 centigrade.   |

 Tel: 1-631-559-9269 1-516-512-3133

 Email: [info@creative-biomart.com](mailto:info@creative-biomart.com)  Fax: 1-631-938-8127

 45-1 Ramsey Road, Shirley, NY 11967, USA

|                       |  |
|-----------------------|--|
| <b>Storage Buffer</b> | Lyophilised from 0.2 µm filtered PBS solution pH 7.4. Upon receipt centrifuge vial to ensure maximal product extraction, recommended: 20 sec, 5K RPM |
|-----------------------|--|

|                    |        |
|--------------------|--------|
| <b>Conjugation</b> | Biotin |
|--------------------|--------|

## GENE INFORMATION

|                  |   |
|------------------|---|
| <b>Gene Name</b> | CD28 CD28 molecule [ Homo sapiens (human) ] |
|------------------|---|

|                        |      |
|------------------------|------|
| <b>Official Symbol</b> | CD28 |
|------------------------|------|

|                 |  |
|-----------------|--|
| <b>Synonyms</b> | CD28; CD28 molecule; CD28 antigen (Tp44); T-cell-specific surface glycoprotein<br>CD28; T cell specific surface glycoprotein; CD28 antigen; Tp44; MGC138290; |
|-----------------|--|

|                |     |
|----------------|-----|
| <b>Gene ID</b> | 940 |
|----------------|-----|

|                    |              |
|--------------------|--------------|
| <b>mRNA Refseq</b> | NM_001243077 |
|--------------------|--------------|

|                       |              |
|-----------------------|--------------|
| <b>Protein Refseq</b> | NP_001230006 |
|-----------------------|--------------|

|            |        |
|------------|--------|
| <b>MIM</b> | 186760 |
|------------|--------|

|                   |        |
|-------------------|--------|
| <b>UniProt ID</b> | P10747 |
|-------------------|--------|

 Tel: 1-631-559-9269 1-516-512-3133

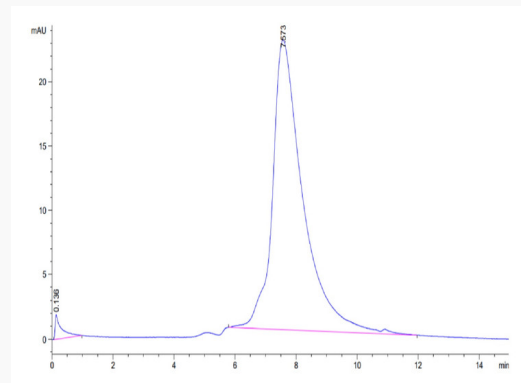
 Email: [info@creative-biomart.com](mailto:info@creative-biomart.com)  Fax: 1-631-938-8127

 45-1 Ramsey Road, Shirley, NY 11967, USA

**Biotinylated  
Human/Cynomolgus/Rh  
macaque CD28 on  
Tris-Bis PAGE under  
reduced condition.  
The purity is greater  
than 95%.**



**The purity of  
Biotinylated  
Human/Cynomolgus/Rh  
macaque CD28 is  
greater than 95% as  
determined by SEC-  
HPLC.**



**Immobilized Anti-  
CD28 Antibody, hFc  
Tag at 2 µg/mL (100  
µL/Well) on the plate.  
Dose response curve  
for Biotinylated  
Human/Cynomolgus/Rh**

Tel: 1-631-559-9269 1-516-512-3133

Email: [info@creative-biomart.com](mailto:info@creative-biomart.com) Fax: 1-631-938-8127

45-1 Ramsey Road, Shirley, NY 11967, USA



macaque CD28, His  
Tag with the EC50 of  
24.4 ng/mL  
determined by ELISA.

 Tel: 1-631-559-9269 1-516-512-3133

 Email: [info@creative-biomart.com](mailto:info@creative-biomart.com)  Fax: 1-631-938-8127

 45-1 Ramsey Road, Shirley, NY 11967, USA