

# Recombinant Human/Cynomolgus/Rhesus macaque CD28 protein, His-tagged

Cat. No. CD28-337H Lot. No. (See product label)

## SPECIFICATION

<b>Product Overview</b>	Recombinant Human/Cynomolgus/Rhesus macaque CD28 protein (Asn19-Pro152), fused to His tag at C-terminus, was expressed in human 293 cells (HEK293). In the region Asn19-Pro152, the AA sequence of Human, Cynomolgus and Rhesus macaque CD28 are homologous.
<b>Species</b>	Human/Cynomolgus/Rhesus macaque
<b>Source</b>	HEK293
<b>ProteinLength</b>	134
<b>Description</b>	T-cell-specific surface glycoprotein CD28 is also known as TP44, is a single-pass type I membrane protein which contains one Ig-like V-type (immunoglobulin-like) domain. It is one of the molecules expressed on T cells that provide co-stimulatory signals, which are required for T cell activation. CD28 is the receptor for CD80 (B7.1) and CD86 (B7.2). When activated by Toll-like receptor ligands, the CD80 expression is upregulated in antigen presenting cells (APCs). The CD86 expression on antigen presenting cells is constitutive. CD28 is the only B7 receptor constitutively expressed on naive T cells.
<b>Form</b>	Lyophilized from 0.22 um filtered solution in PBS, pH7.4, 10% trehalose.
<b>Molecular Mass</b>	The protein has a calculated MW of 17.0 kDa. The protein migrates as 30-42 kDa under reducing (R) condition (SDS-PAGE) due to glycosylation.

 Tel: 1-631-559-9269 1-516-512-3133

 Email: [info@creative-biomart.com](mailto:info@creative-biomart.com)  Fax: 1-631-938-8127

 45-1 Ramsey Road, Shirley, NY 11967, USA

<b>Endotoxin</b>	Less than 1.0 EU per ug by the LAL method.
<b>Purity</b>	>90% as determined by SDS-PAGE.
<b>Storage</b>	<p>For long term storage, the product should be stored at lyophilized state at -20 centigrade or lower.</p> <p>Please avoid repeated freeze-thaw cycles.</p> <p>This product is stable after storage at:</p> <p>-20 centigrade to -70 centigrade for 12 months in lyophilized state;  -70 centigrade for 3 months under sterile conditions after reconstitution.</p>
<b>Reconstitution</b>	It is recommended that sterile water be added to the vial to prepare a stock solution of 0.2 ug/ul. Centrifuge the vial at 4°C before opening to recover the entire contents.

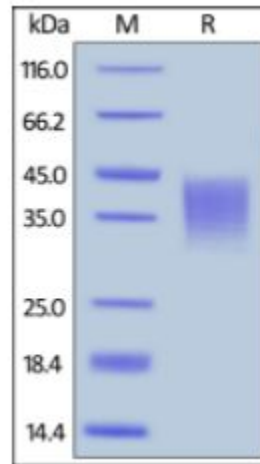
## GENE INFORMATION

<b>Gene Name</b>	CD28
<b>Official Symbol</b>	CD28
<b>Synonyms</b>	CD28; CD28 molecule; CD28 antigen (Tp44); T-cell-specific surface glycoprotein CD28; T cell specific surface glycoprotein; CD28 antigen; Tp44; MGC138290
<b>Gene ID</b>	940
<b>mRNA Refseq</b>	NM_001243077
<b>Protein Refseq</b>	NP_001230006
<b>MIM</b>	186760

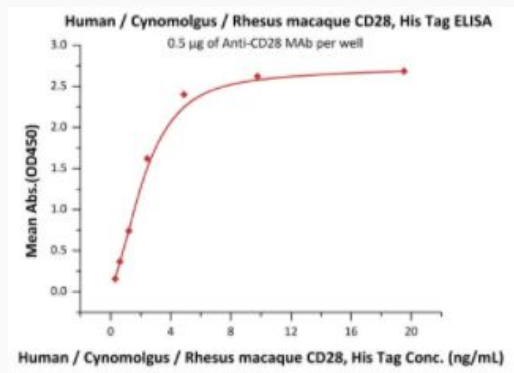
 Tel: 1-631-559-9269 1-516-512-3133

 Email: [info@creative-biomart.com](mailto:info@creative-biomart.com)  Fax: 1-631-938-8127

 45-1 Ramsey Road, Shirley, NY 11967, USA

**UniProt ID**
**P10747**
**SDS-PAGE of CD28-337H**


Human/Cynomolgus/Rhesus macaque CD28 on SDS-PAGE under reducing (R) condition. The gel was stained overnight with Coomassie Blue. The purity of the protein is greater than 90%.

**Bioactivity-ELISA of CD28-337H**


Immobilized Anti-CD28 MAb at 5 µg/mL (100 µL/well) can bind Human/Cynomolgus/Rhesus macaque CD28, His Tag with a linear range of 0.3-2

Tel: 1-631-559-9269 1-516-512-3133

Email: [info@creative-biomart.com](mailto:info@creative-biomart.com) Fax: 1-631-938-8127

45-1 Ramsey Road, Shirley, NY 11967, USA



ng/mL (QC tested).

 Tel: 1-631-559-9269 1-516-512-3133

 Email: [info@creative-biomart.com](mailto:info@creative-biomart.com)  Fax: 1-631-938-8127

 45-1 Ramsey Road, Shirley, NY 11967, USA