

Recombinant Human/Cynomolgus/Rhesus macaque CD28 protein(Asn 19 - Pro 152)

Cat. No. CD28-4995H **Lot. No.** (See product label)

SPECIFICATION

Product Overview	Recombinant Human / Cynomolgus / Rhesus macaque CD28 protein(Asn 19 - Pro 152)(P10747-1), fused with N-terminal hFc tag, was expressed in HEK293.
Species	Human / Cynomolgus / Rhesus macaque
Source	HEK293
ProteinLength	Asn 19 - Pro 152
Form	Lyophilized from 0.22 um filtered solution in PBS (pH 7.4). Normally 8% trehalose is added as protectant before lyophilization.
Bio-activity	Immobilized Human/Cynomolgus/Rhesus macaque CD28, hFc Tag at 0.5ug/ml (100ul/Well) on the plate. Dose response curve for Biotinylated Anti-CD28 Antibody, hFc Tag with the EC50 of 46.3ng/ml determined by ELISA.
Molecular Mass	The protein has a predicted MW of 42.6 kDa. Due to glycosylation, the protein migrates to 55-70 kDa based on Tris-Bis PAGE result.
Endotoxin	Less than 1EU per ug by the LAL method.
Purity	> 95% as determined by Tris-Bis PAGE > 95% as determined by HPLC

 Tel: 1-631-559-9269 1-516-512-3133

 Email: info@creative-biomart.com  Fax: 1-631-938-8127

 45-1 Ramsey Road, Shirley, NY 11967, USA

Storage

-20 to -80°C for 12 months as supplied from date of receipt.
 -80°C for 3-6 months after reconstitution.
 2-8°C for 2-7 days after reconstitution.
 Recommend to aliquot the protein into smaller quantities for optimal storage. Please minimize freeze-thaw cycles.

Reconstitution

Centrifuge the tube before opening. Reconstituting to a concentration more than 100 µg/ml is recommended. Dissolve the lyophilized protein in distilled water.

GENE INFORMATION

Gene Name [CD28 CD28 molecule \[Homo sapiens \]](#)

Official Symbol [CD28](#)

Synonyms CD28; CD28 molecule; CD28 antigen (Tp44); T-cell-specific surface glycoprotein
 CD28; T cell specific surface glycoprotein; CD28 antigen; Tp44; MGC138290;

Gene ID [940](#)

mRNA Refseq [NM_001243077](#)

Protein Refseq [NP_001230006](#)

MIM [186760](#)

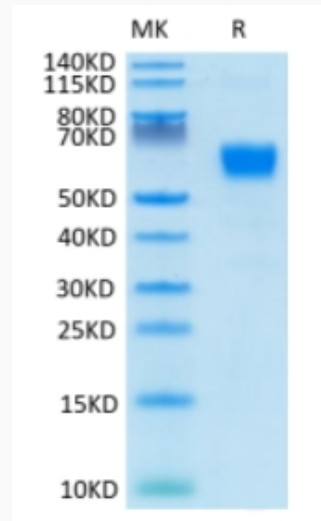
UniProt ID [P10747](#)

 Tel: 1-631-559-9269 1-516-512-3133

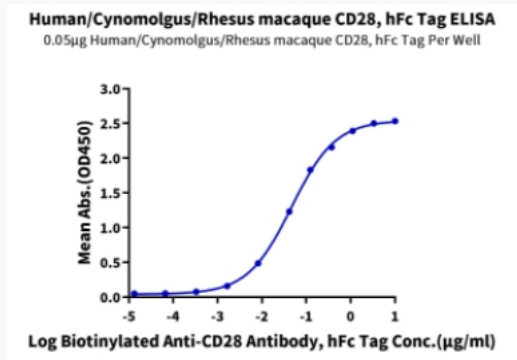
 Email: info@creative-biomart.com  Fax: 1-631-938-8127

 45-1 Ramsey Road, Shirley, NY 11967, USA

Tris-Bis PAGE



ELISA Data



 Tel: 1-631-559-9269 1-516-512-3133

 Email: info@creative-biomart.com  Fax: 1-631-938-8127

 45-1 Ramsey Road, Shirley, NY 11967, USA