

# CD28 protein-coupled magnetic MicroBeads

**Cat. No.** CD28-503M    **Lot. No.** (See product label)

## SPECIFICATION

**Species**                      Human

**Capacity**                    for 1×10<sup>9</sup> total cells

**Background**

The CD28<sup>+</sup> cells are indirectly magnetically labeled with CD28-PE and Anti-PE MicroBeads.

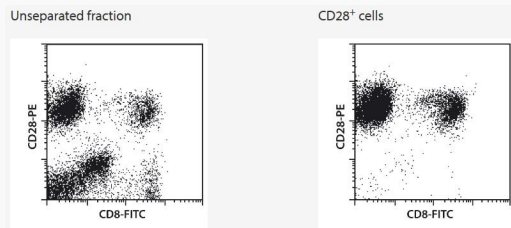
The CD28 antigen is a type I trans-membrane protein, highly expressed on most CD4<sup>+</sup> T cells, many CD8<sup>+</sup> T cells, and on malignant plasma cells (myeloma cells). Ligation of CD28 with CD80 (B7-1) or CD86 (B7-2) on target cells provides a critical costimulatory signal for T cell activation. Blockade of CD28-B7 interaction leads to an inhibition of immune responses both in vivo and in vitro.

**Application**

The CD28 MicroBead Kit was developed for the isolation of CD28<sup>+</sup> cells from PBMCs, e.g., for phenotypical or functional characterization.

CD28<sup>+</sup> T cell subsets can be isolated in combination with kits for untouched T cell isolation, e.g., the CD4<sup>+</sup> T Cell Isolation Kit or the CD8<sup>+</sup> T Cell Isolation Kit.

**Analysis**



CD28<sup>+</sup> cells were fluorescently and magnetically labeled using the CD28 MicroBead

 Tel: 1-631-559-9269    1-516-512-3133

 Email: [info@creative-biomart.com](mailto:info@creative-biomart.com)     Fax: 1-631-938-8127

 45-1 Ramsey Road, Shirley, NY 11967, USA



Kit. Labeled cells were separated from human PBMCs using an MS Column and a MiniMACS Separator. Cells were additionally stained with CD8-FITC.

 Tel: 1-631-559-9269 1-516-512-3133

 Email: [info@creative-biomart.com](mailto:info@creative-biomart.com)  Fax: 1-631-938-8127

 45-1 Ramsey Road, Shirley, NY 11967, USA