

Recombinant Human CD28 Protein, His-tagged

Cat. No. CD28-667H Lot. No. (See product label)

SPECIFICATION

Product Overview	Recombinant Human CD28 Protein (Asn19-Pro152) with His tag was expressed in 293F.
Species	Human
Source	HEK293
ProteinLength	Asn19-Pro152
Description	The protein encoded by this gene is essential for T-cell proliferation and survival, cytokine production, and T-helper type-2 development. Several alternatively spliced transcript variants encoding different isoforms have been found for this gene.
Form	Freeze-dried powder
Molecular Mass	Predicted Molecular Mass: 16.8 kDa; Accurate Molecular Mass: 33-44 kDa
Purity	> 90%
Applications	Positive Control; Immunogen; SDS-PAGE; WB.
Stability	The thermal stability is described by the loss rate. The loss rate was determined by accelerated thermal degradation test, that is, incubate the protein at 37 centigrade for 48h, and no obvious degradation and precipitation were observed. The loss rate is less than 5% within the expiration date under appropriate storage condition.

 Tel: 1-631-559-9269 1-516-512-3133

 Email: info@creative-biomart.com  Fax: 1-631-938-8127

 45-1 Ramsey Road, Shirley, NY 11967, USA

Storage	Avoid repeated freeze/thaw cycles. Store at 2-8 centigrade for one month. Aliquot and store at -80 centigrade for 12 months.
Storage Buffer	20mM Tris, 150mM NaCl, pH8.0, containing 1mM EDTA, 1mM DTT, 0.01% SKL, 5% Trehalose and Proclin300.
Reconstitution	Reconstitute in 20mM Tris, 150mM NaCl (pH8.0) to a concentration of 0.1-1.0 mg/mL. Do not vortex.

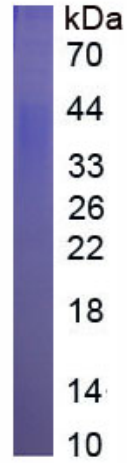
GENE INFORMATION

Gene Name	CD28 CD28 molecule [Homo sapiens (human)]
Official Symbol	CD28
Synonyms	CD28; CD28 molecule; CD28 antigen (Tp44); T-cell-specific surface glycoprotein CD28; T cell specific surface glycoprotein; CD28 antigen; Tp44; MGC138290;
Gene ID	940
mRNA Refseq	NM_001243077
Protein Refseq	NP_001230006
MIM	186760
UniProt ID	P10747

 Tel: 1-631-559-9269 1-516-512-3133

 Email: info@creative-biomart.com  Fax: 1-631-938-8127

 45-1 Ramsey Road, Shirley, NY 11967, USA



Tel: 1-631-559-9269 1-516-512-3133

Email: info@creative-biomart.com Fax: 1-631-938-8127

45-1 Ramsey Road, Shirley, NY 11967, USA