

## Recombinant Human CD28 Protein, His&SUMO-tagged

Cat. No. CD28-668H Lot. No. (See product label)

### SPECIFICATION

<b>Product Overview</b>	Recombinant Human CD28 Protein (Met1-Pro152) with His&SUMO tag was expressed in 293F.
<b>Species</b>	Human
<b>Source</b>	HEK293
<b>ProteinLength</b>	Met1-Pro152
<b>Description</b>	The protein encoded by this gene is essential for T-cell proliferation and survival, cytokine production, and T-helper type-2 development. Several alternatively spliced transcript variants encoding different isoforms have been found for this gene.
<b>Form</b>	Freeze-dried powder
<b>Molecular Mass</b>	Predicted Molecular Mass: 29.8 kDa; Accurate Molecular Mass: 44-60 kDa
<b>Purity</b>	> 90%
<b>Applications</b>	Positive Control; Immunogen; SDS-PAGE; WB.
<b>Stability</b>	The thermal stability is described by the loss rate. The loss rate was determined by accelerated thermal degradation test, that is, incubate the protein at 37 centigrade for 48h, and no obvious degradation and precipitation were observed. The loss rate is less than 5% within the expiration date under appropriate storage condition.

 Tel: 1-631-559-9269 1-516-512-3133

 Email: [info@creative-biomart.com](mailto:info@creative-biomart.com)  Fax: 1-631-938-8127

 45-1 Ramsey Road, Shirley, NY 11967, USA

<b>Storage</b>	Avoid repeated freeze/thaw cycles. Store at 2-8 centigrade for one month. Aliquot and store at -80 centigrade for 12 months.
<b>Storage Buffer</b>	20mM Tris, 150mM NaCl, pH8.0, containing 1mM EDTA, 1mM DTT, 0.01% SKL, 5% Trehalose and Proclin300.
<b>Reconstitution</b>	Reconstitute in 20mM Tris, 150mM NaCl (pH8.0) to a concentration of 0.1-1.0 mg/mL. Do not vortex.

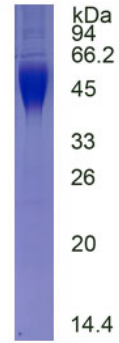
## GENE INFORMATION

<b>Gene Name</b>	CD28 CD28 molecule [ Homo sapiens (human) ]
<b>Official Symbol</b>	CD28
<b>Synonyms</b>	CD28; CD28 molecule; CD28 antigen (Tp44); T-cell-specific surface glycoprotein CD28; T cell specific surface glycoprotein; CD28 antigen; Tp44; MGC138290;
<b>Gene ID</b>	940
<b>mRNA Refseq</b>	NM_001243077
<b>Protein Refseq</b>	NP_001230006
<b>MIM</b>	186760
<b>UniProt ID</b>	P10747

 Tel: 1-631-559-9269 1-516-512-3133

 Email: [info@creative-biomart.com](mailto:info@creative-biomart.com)  Fax: 1-631-938-8127

 45-1 Ramsey Road, Shirley, NY 11967, USA



Tel: 1-631-559-9269 1-516-512-3133

Email: [info@creative-biomart.com](mailto:info@creative-biomart.com) Fax: 1-631-938-8127

45-1 Ramsey Road, Shirley, NY 11967, USA