

Recombinant Full Length Human CD2AP Protein, C-Flag-tagged

Cat. No. CD2AP-1802HFL **Lot. No.** (See product label)

SPECIFICATION

Product Overview	Recombinant Full Length Human CD2AP Protein, fused to Flag-tag at C-terminus, was expressed in Mammalian cells.
Species	Human
Source	Mammalian Cells
Description	This gene encodes a scaffolding molecule that regulates the actin cytoskeleton. The protein directly interacts with filamentous actin and a variety of cell membrane proteins through multiple actin binding sites, SH3 domains, and a proline-rich region containing binding sites for SH3 domains. The cytoplasmic protein localizes to membrane ruffles, lipid rafts, and the leading edges of cells. It is implicated in dynamic actin remodeling and membrane trafficking that occurs during receptor endocytosis and cytokinesis. Haploinsufficiency of this gene is implicated in susceptibility to glomerular disease.
Form	25 mM Tris HCl, pH 7.3, 100 mM glycine, 10% glycerol.
Molecular Mass	71.3 kDa
AA Sequence	MVDYIVEYDYDAVHDEL TIRVGEIIRNVKKLQEEGWLEGELNGRRGMFPDNFVKEI KRETEFKDDSLPI KRERHGNVASLVQRISTYGLPAGGIQPHPQTKNIKKTKKRQCK VLFEYIPQNEDELELKVGDIIIDINEE VEEGWWSGTLNKNLGLFPSNFVKELEVTDG ETHEAQDDSETVLGPTSPIPSLGNVSETASGSVTQPKK IRGIGFGDIFKEGSVKLRT

 Tel: 1-631-559-9269 1-516-512-3133

 Email: info@creative-biomart.com  Fax: 1-631-938-8127

 45-1 Ramsey Road, Shirley, NY 11967, USA

RTSSSETEEKKPEKPLILQSLGPKTQSVEITKTDTEGKIKAKEKEYCRTLFAFAY EGTNEDE
 LTFKEGEIIHLISKETGEAGWWRGELNGKEGVFPDNFAVQINELDKDFPKPKKPPPP
 AKAPAP KPELIAAEKKYFSLKPEEKDEKSTLEQKPSKPAAPQVPPKKPTPPTKASNL
 LRSSGTVYPKRPEKPVPPP PPIAKINGEVSSISSKFETEPVSKLKLDDSEQLPLRPKSV
 DFDSLTVRTSKETDVVNFDDIASSENLLHLT ANRPKMPGRRLLPGRFNGGHSPHSP
 EKILKLPKEEDSANLKPSELKKDTCYSPKPSVYLSTPSSASKANT TAFLTPLEIKAKV
 ETDDVKKNSLDELRAQIIELLCIVEALKKDHGKELEKLRKDLDEEKTMRSNLEMEIE K
 LKKAVLSS TRTRPLEQKLISEEDLAANDILDYKDDDDKV

Purity	> 80% as determined by SDS-PAGE and Coomassie blue staining.
Stability	Stable for 12 months from the date of receipt of the product under proper storage and handling conditions. Avoid repeated freeze-thaw cycles.
Storage	Store at -80 centigrade.
Concentration	>50 ug/mL as determined by microplate BCA method.
Preparation	Recombinant protein was captured through anti-DDK affinity column followed by conventional chromatography steps.
Protein Families	Druggable Genome
Full Length	Full L.

GENE INFORMATION

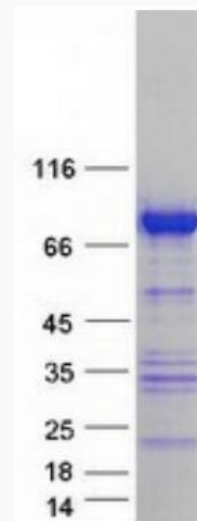
Gene Name	CD2AP CD2 associated protein [Homo sapiens (human)]
Official Symbol	CD2AP

 Tel: 1-631-559-9269 1-516-512-3133

 Email: info@creative-biomart.com  Fax: 1-631-938-8127

 45-1 Ramsey Road, Shirley, NY 11967, USA

Synonyms	CMS
Gene ID	23607
mRNA Refseq	NM_012120.3
Protein Refseq	NP_036252.1
MIM	604241
UniProt ID	Q9Y5K6



Coomassie blue staining of purified CD2AP protein.

 Tel: 1-631-559-9269 1-516-512-3133

 Email: info@creative-biomart.com  Fax: 1-631-938-8127

 45-1 Ramsey Road, Shirley, NY 11967, USA