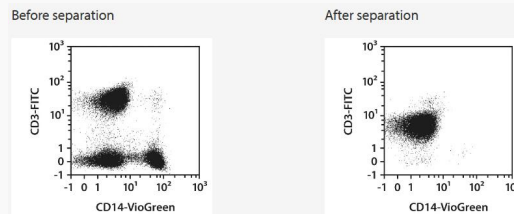


LRSC CD3 protein-coupled magnetic MicroBeads

Cat. No. CD3-3112M Lot. No. (See product label)

SPECIFICATION

Species	Human
Capacity	for 1 LRSC
Background	The CD3 antigen is associated with the T cell receptor (TCR) heterodimer. CD3 is expressed on all T cells, constituting 15–20% of human peripheral blood leukocytes.
Application	The purified CD3+ cells are well suited for further flow cytometric, functional, or molecular analysis.



Analysis

Separation of an LRSC sample using the StraightFrom LRSC CD3 MicroBead Kit and the MultiMACS Cell24 Separator Plus with the Single-Column Adapter and LS Columns. Cells were fluorescently stained with REAfinity Antibodies CD3-FITC, CD14-VioGreen, as well as CD45-VioBlue and analyzed by flow cytometry using the MACSQuant Analyzer. Viable leukocytes were gated for analysis based on scatter signals, propidium iodide fluorescence, and CD45 expression.

 Tel: 1-631-559-9269 1-516-512-3133

 Email: info@creative-biomart.com  Fax: 1-631-938-8127

 45-1 Ramsey Road, Shirley, NY 11967, USA