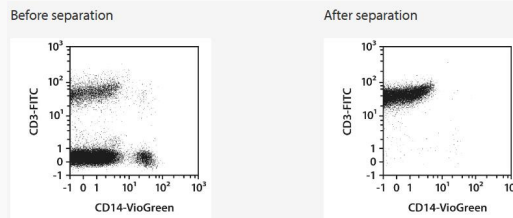


Buffy Coat CD3 protein-coupled magnetic MicroBeads

Cat. No. CD3-3912M Lot. No. (See product label)

SPECIFICATION

Species	Human
Capacity	for 1 buffy coat
Background	The CD3 antigen is associated with the T cell receptor (TCR) heterodimer. CD3 is expressed on all T cells, constituting 15–20% of human peripheral blood leukocytes.
Application	The purified CD3+ cells are well suited for further flow cytometric, functional, or molecular analysis.




Analysis

Separation of a buffy coat sample using the StraightFrom Buffy Coat CD3 MicroBead Kit and the MultiMACS Cell24 Separator Plus with the Single-Column Adapter and Whole Blood Columns. Cells were fluorescently stained with REAfinity Antibodies CD3-FITC, CD14-VioGreen, as well as with CD45-VioBlue and analyzed by flow cytometry using the MACSQuant Analyzer. Viable leukocytes were gated for analysis based on scatter signals, propidium iodide fluorescence, and CD45 expression.

 Tel: 1-631-559-9269 1-516-512-3133

 Email: info@creative-biomart.com  Fax: 1-631-938-8127

 45-1 Ramsey Road, Shirley, NY 11967, USA