

CD3 protein-coupled magnetic NanoBeads

Cat. No. CD3-3942M Lot. No. (See product label)

SPECIFICATION

Species Human

Beads Size 500 μ

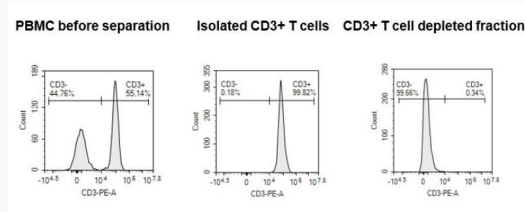
Capacity Up to 5×10^8 total MNCs

Formulation Bio-degradable matrix coated nanoparticle conjugated with anti-CD3 antibodies supplied in phosphate buffered-saline (PBS), containing Human Serum Albumin (HSA), pH 7.0-7.4.

Application Positive selection or depletion of CD3+ T cells from leukapheresis, PBMC or cell cultures. Isolated CD3+ T cells can be used for culture and expansion, flow cytometry, T cells functional assays.

Storage Store at 2-8 °C. Do not freeze.

Analysis



Tel: 1-631-559-9269 1-516-512-3133

Email: info@creative-biomart.com Fax: 1-631-938-8127

45-1 Ramsey Road, Shirley, NY 11967, USA