

Whole Blood CD3 protein-coupled magnetic MicroBeads

Cat. No. CD3-49378M Lot. No. (See product label)

SPECIFICATION

Species Human

Capacity for 40 mL whole blood

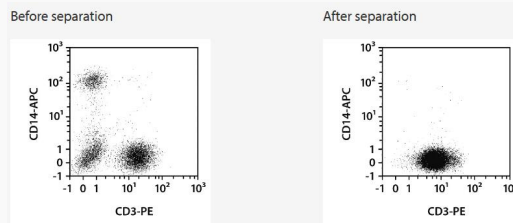
Background

StraightFrom Whole Blood CD3 MicroBeads recognize the CD3 antigen which is associated with the T cell receptor (TCR) heterodimer. CD3 is expressed on all T cells, constituting 15–20% of human peripheral blood leukocytes. StraightFrom Whole Blood MicroBeads allow the fast isolation of CD3+ cells directly from whole blood or bone marrow, thus minimizing hands-on time and maximizing yield of target cells. StraightFrom Whole Blood MicroBeads in combination with the autoMACS Pro Separator allow standardization of the cell separation procedure and safe handling of hazardous samples.

Application

The purified CD3+ cells are well-suited for further flow cytometric, functional, or molecular analysis including lineage-specific chimerism analysis after allogeneic stem cell transplantation.

Analysis



Separation of a whole blood sample using the StraightFrom Whole Blood CD3

 Tel: 1-631-559-9269 1-516-512-3133

 Email: info@creative-biomart.com  Fax: 1-631-938-8127

 45-1 Ramsey Road, Shirley, NY 11967, USA

MicroBeads and the MultiMACS Cell24 Separator Plus with the Single-Column Adapter and Whole Blood Columns without washing step after labeling. Cells were fluorescently stained with CD3-PE, CD14-APC, as well as CD45-VioBlue and analyzed by flow cytometry using the MACSQuant Analyzer. Cells were triggered via CD45-VioBlue, cell debris and dead cells were excluded from the analysis based on scatter signals and propidium iodide fluorescence.

 Tel: 1-631-559-9269 1-516-512-3133

 Email: info@creative-biomart.com  Fax: 1-631-938-8127

 45-1 Ramsey Road, Shirley, NY 11967, USA