

Buffy Coat REAlease CD3 protein-coupled magnetic MicroBeads

Cat. No. CD3-9132M **Lot. No.** (See product label)

SPECIFICATION

Species Human

Capacity for 1 buffy coat

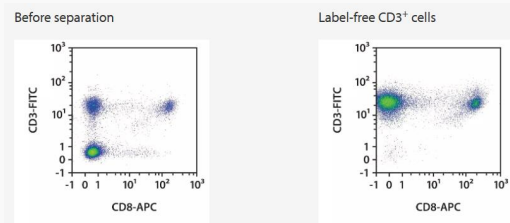
Background

CD3 is expressed on all T cells and CD56+ NK T cells and is associated with the T cell receptor (TCR) heterodimer. Most of the human peripheral blood lymphocytes (70–80%) and thymocytes (65–85%) are CD3+. The epitope recognized by the REAlease CD3-Biotin Complex is located on the CD3ε chain.

Application

The purified CD3+ cells are bead-free, practical for consecutive magnetic isolation and optionally label-free with epitopes available for any downstream application. The isolated cells are suited for further flow cytometric analyses, molecular biology applications, and functional studies.

Cell purity



CD3+ cells were isolated from a complete buffy coat using the StraightFrom Buffy Coat REAlease CD3 MicroBead Kit, Whole Blood Columns, and a MultiMACS Cell24 Separator Plus with the Single-Column Adapter. Cells were fluorescently

 Tel: 1-631-559-9269 1-516-512-3133

 Email: info@creative-biomart.com  Fax: 1-631-938-8127

 45-1 Ramsey Road, Shirley, NY 11967, USA

stained with REAfinity Antibodies CD3-FITC, CD8-APC, and CD45-VioBlue and analyzed by flow cytometry using the MACSQuant Analyzer X. Cell debris and dead cells were excluded from the analysis based on scatter signals and propidium iodide fluorescence.

 Tel: 1-631-559-9269 1-516-512-3133

 Email: info@creative-biomart.com  Fax: 1-631-938-8127

 45-1 Ramsey Road, Shirley, NY 11967, USA