

## Recombinant Human CD300A Protein, His-tagged

Cat. No. CD300A-015H Lot. No. (See product label)

### SPECIFICATION

<b>Product Overview</b>	Recombinant Human CD300A Protein with His tag was expressed in E. coli.
<b>Species</b>	Human
<b>Source</b>	E.coli
<b>Description</b>	CD300a is an inhibitory receptor in the Ig superfamily, a type I transmembrane protein containing immunoreceptor tyrosine-based inhibitory motifs (ITIMs) on its cytoplasmic tail. Human CD300a (CMRF-35H, IRp60) and mouse CD300a (CLM-8, LMIR-1, MAIR-I) are functional orthologs, expressed by monocytes, granulocytes, mast cells, and subsets of B cells. Human, but not mouse, CD300a is also expressed by unstimulated NK cells and subsets of T cells. Phosphorylated ITIMs are able to recruit different phosphatases, such as SHP-1 and SHP-2, leading to inhibition of cell activation.
<b>Molecular Mass</b>	~23 kDa
<b>AA Sequence</b>	LSKCRTVAGPVGGSLSVQCPEYKEHRTLNKYWCRPPQIFLCDKIVETKGSAGKRNG RVSIRDSPANLSFTVTLENLTEEDAGTYWCGVDTPWLRDFHDPVVEVEVSFVFPAST SMTPASITAAKTSTITTAFFPPVSSTTLFAVGATHSASIQEETEEVNSQLP
<b>Purity</b>	Transferred into competent cells and the supernatant was purified by NI column affinity chromatography and the purity is > 85% (by SDS-PAGE).
<b>Notes</b>	For research use only, not for use in diagnostic procedure.

 Tel: 1-631-559-9269 1-516-512-3133

 Email: [info@creative-biomart.com](mailto:info@creative-biomart.com)  Fax: 1-631-938-8127

 45-1 Ramsey Road, Shirley, NY 11967, USA

**Storage** Store at 4 centigrade short term. Aliquot and store at -20 centigrade long term. Avoid freeze-thaw cycles.

**Storage Buffer** PBS, 4M Urea, pH7.4

## GENE INFORMATION

**Gene Name** CD300A CD300a molecule [ Homo sapiens (human) ]

**Official Symbol** CD300A

**Synonyms** CD300A; CD300a molecule; CD300a antigen; CMRF35-like molecule 8; CMRF 35 H9; CMRF35H; IGSF12; IRC1; IRC2; Irp60; NK inhibitory receptor; leukocyte membrane antigen; inhibitory receptor protein 60; CD300 antigen-like family member A; immunoglobulin superfamily member 12; CMRF35H leukocyte immunoglobulin-like receptor; CLM-8; IRp60; CMRF-35H; CMRF35-H; CMRF35H9; CMRF35-H9; IRC1/IRC2; CMRF-35-H9;

**Gene ID** 11314

**mRNA Refseq** NM\_001256841

**Protein Refseq** NP\_001243770

**MIM** 606790

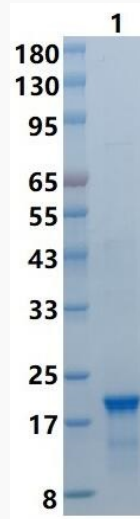
**UniProt ID** Q9UGN4

 Tel: 1-631-559-9269 1-516-512-3133

 Email: [info@creative-biomart.com](mailto:info@creative-biomart.com)  Fax: 1-631-938-8127

 45-1 Ramsey Road, Shirley, NY 11967, USA

SDS-PAGE



 Tel: 1-631-559-9269 1-516-512-3133

 Email: [info@creative-biomart.com](mailto:info@creative-biomart.com)  Fax: 1-631-938-8127

 45-1 Ramsey Road, Shirley, NY 11967, USA