

Recombinant Human CD300A Protein, GST-Tagged

Cat. No. CD300A-0777H Lot. No. (See product label)

SPECIFICATION

Product Overview	Human CD300A full-length ORF (NP_009192.2, 1 a.a. - 299 a.a.) recombinant protein with GST-tag at N-terminal.
Species	Human
Source	Wheat Germ
Description	This gene encodes a member of the CD300 glycoprotein family of cell surface proteins found on leukocytes involved in immune response signaling pathways. This gene is located on chromosome 17 in a cluster with all but one of the other family members. Multiple transcript variants encoding different isoforms have been found for this gene. [provided by RefSeq, Feb 2012]
Molecular Mass	59.6 kDa
AA Sequence	MWLPWALLLLWVPGCFALSKCRTVAGPVGGSLSVQCPYEKEHRTLNKYWCRPPQI FLCDKIVETKGSAGKRNGRVSIRDSPANLSFTVTLENLTEEDAGTYWCGVDTPWLR DFHDPVVEVEVSVPASTSMTPASITAAKTSTITTAFFPPVSSTTLFAVGATHSASIQEE TEEVVNSQLPLLLSLLALLLLLLLVGASLLAWRMFQKWIKAGDHSELSQNPKQAATQS ELHYANLELLMWPLQEKPAPPREVEVEYSTVASPREELHYASVVFDSNTNRIAAQRP REEEPDSDYSVIRKT
Applications	Enzyme-linked Immunoabsorbent Assay Western Blot (Recombinant protein) Antibody Production

 Tel: 1-631-559-9269 1-516-512-3133

 Email: info@creative-biomart.com  Fax: 1-631-938-8127

 45-1 Ramsey Road, Shirley, NY 11967, USA

Protein Array

Storage Store at -80 centigrade. Aliquot to avoid repeated freezing and thawing.

Storage Buffer 50 mM Tris-HCl, 10 mM reduced Glutathione, pH=8.0 in the elution buffer.

GENE INFORMATION

Gene Name [CD300A CD300a molecule \[Homo sapiens \]](#)

Official Symbol [CD300A](#)

Synonyms CD300A; CD300a molecule; CD300a antigen; CMRF35-like molecule 8; CMRF 35 H9; CMRF35H; IGSF12; IRC1; IRC2; Irp60; NK inhibitory receptor; leukocyte membrane antigen; inhibitory receptor protein 60; CD300 antigen-like family member A; immunoglobulin superfamily member 12; CMRF35H leukocyte immunoglobulin-like receptor; CLM-8; IRp60; CMRF-35H; CMRF35-H; CMRF35H9; CMRF35-H9; IRC1/IRC2; CMRF-35-H9;

Gene ID [11314](#)

mRNA Refseq [NM_001256841](#)

Protein Refseq [NP_001243770](#)

MIM [606790](#)

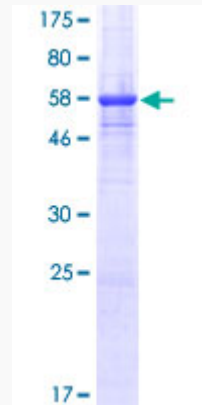
UniProt ID [Q9UGN4](#)

 Tel: 1-631-559-9269 1-516-512-3133

 Email: info@creative-biomart.com  Fax: 1-631-938-8127

 45-1 Ramsey Road, Shirley, NY 11967, USA

**Quality Control
Testing**



12.5% SDS-PAGE Stained with Coomassie Blue.

 Tel: 1-631-559-9269 1-516-512-3133

 Email: info@creative-biomart.com  Fax: 1-631-938-8127

 45-1 Ramsey Road, Shirley, NY 11967, USA